

Anti-DRD3 antibody (213-329) (STJ23431)

STJ23431

GENERAL INFORMATION

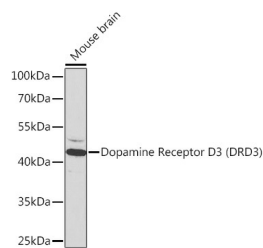
Product Type	Primary antibodies
Short Description	Rabbit polyclonal antibody anti-DRD3 (213-329) is suitable for use in Western Blot, Immunohistochemistry and Immunofluorescence.
Applications	WB, IHC, IF
Host/Source	Rabbit
Reactivity	Human, Mouse, Rat

PRODUCT PROPERTIES

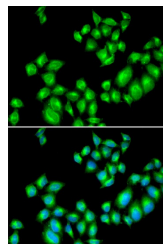
Clonality	Polyclonal
Clone ID	
Concentration	
Conjugation	Unconjugated
Purification	Affinity purification
Dilution Range	WB 1:500-1:2000 IHC 1:50-1:200 IF 1:50-1:200
Formulation	PBS containing 0.02% Sodium Azide, 50% Glycerol, pH7.3.
Isotype	IgG
Storage	Store in a freezer at -20°C and avoid freeze-thaw cycles.
Instruction	

TARGET INFORMATION

Gene ID	1814
Gene Symbol	DRD3
Uniprot ID	DRD3_HUMAN
Immunogen	Recombinant fusion protein containing a sequence corresponding to amino acids 213-329 of human Dopamine Receptor D3 (Dopamine Receptor D3 (DRD3)) (NP_000787.2).
Immunogen Region	213-329
Specificity	
Immunogen Sequence	



Western blot analysis of extracts of mouse brain, using Dopamine Receptor D3 (Dopamine Receptor D3 (DRD3)) antibody (STJ23431) at 1:1000 dilution. Secondary antibody: HRP Goat Anti-rabbit IgG (H+L) at 1:10000 dilution. Lysates/proteins: 25µg per lane. Blocking buffer: 3% nonfat dry milk in TBST.



Immunofluorescence analysis of U2OS cells using Dopamine Receptor D3 (Dopamine Receptor D3 (DRD3)) antibody (STJ23431). Blue: DAPI for nuclear staining.

This product is suitable for in-vitro studies under the RESEARCH USE ONLY [RUO] licence. This product must not be used as for diagnostic or other medical purposes.
St John's Laboratory Ltd, Knowledge Dock Business Centre, University Way, London, E16 2RD | Tel: 0208 223 3081