

Anti-DMD antibody (346-635) (STJ23394)

STJ23394

GENERAL INFORMATION

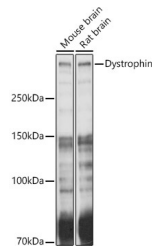
| | |
|--------------------------|---------------------------------------------------------------------------------------------------------------------------------|
| Product Type | Primary antibodies |
| Short Description | Rabbit polyclonal antibody anti-DMD (346-635) is suitable for use in Western Blot, Immunohistochemistry and Immunofluorescence. |
| Applications | WB, IHC, IF |
| Host/Source | Rabbit |
| Reactivity | Human, Mouse, Rat |

PRODUCT PROPERTIES

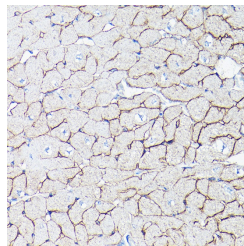
| | |
|----------------------------|-----------------------------------------------------------|
| Clonality | Polyclonal |
| Clone ID | |
| Concentration | |
| Conjugation | Unconjugated |
| Purification | Affinity purification |
| Dilution Range | WB 1:200-1:2000 IHC 1:50-1:200 IF 1:50-1:200 |
| Formulation | PBS containing 0.02% Sodium Azide, 50% Glycerol, pH7.3. |
| Isotype | IgG |
| Storage Instruction | Store in a freezer at -20°C and avoid freeze-thaw cycles. |

TARGET INFORMATION

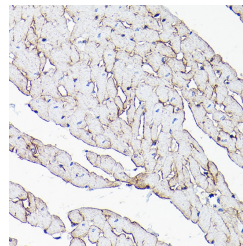
| | |
|---------------------------|--------------------------------------------------------------------------------------------------------------------------|
| Gene ID | 1756 |
| Gene Symbol | DMD |
| Uniprot ID | DMD_HUMAN |
| Immunogen | Recombinant fusion protein containing a sequence corresponding to amino acids 346-635 of human Dystrophin (NP_004007.1). |
| Immunogen Region | 346-635 |
| Specificity | |
| Immunogen Sequence | |



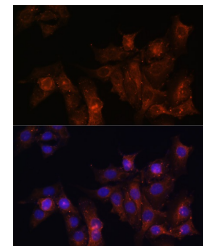
Western blot analysis of extracts of various cell lines, using Dystrophin antibody (STJ23394) at 1:1000 dilution. Secondary antibody: HRP Goat Anti-rabbit IgG (H+L) at 1:10000 dilution. Lysates/proteins: 25ug per lane. Blocking buffer: 3% nonfat dry milk in TBST. Detection: ECL Basic Kit. Exposure time: 10s.



Immunohistochemistry of paraffin-embedded mouse heart using Dystrophin rabbit polyclonal antibody (STJ23394) at dilution of 1:100 (40x lens). Perform high pressure antigen retrieval with 10 mM citrate buffer pH 6.0 before commencing with immunohistochemistry staining protocol.



Immunohistochemistry of paraffin-embedded rat heart using Dystrophin rabbit polyclonal antibody (STJ23394) at dilution of 1:100 (40x lens). Perform high pressure antigen retrieval with 10 mM citrate buffer pH 6.0 before commencing with immunohistochemistry staining protocol.



Immunofluorescence analysis of HeLa cells using Dystrophin antibody (STJ23394) at dilution of 1:100. Blue: DAPI for nuclear staining.