

Anti-DES antibody (121-470) (STJ23369)

STJ23369

GENERAL INFORMATION

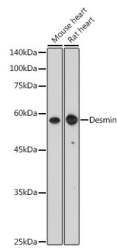
Product Type	Primary antibodies
Short Description	Rabbit polyclonal antibody anti-DES (121-470) is suitable for use in Western Blot, Immunohistochemistry and Immunofluorescence.
Applications	WB, IHC, IF
Host/Source	Rabbit
Reactivity	Human, Mouse, Rat

PRODUCT PROPERTIES

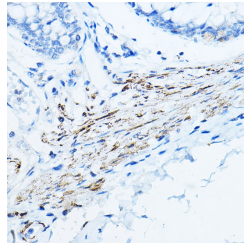
Clonality	Polyclonal
Clone ID	
Concentration	
Conjugation	Unconjugated
Purification	Affinity purification
Dilution Range	WB 1:500-1:2000 IHC 1:50-1:100 IF 1:50-1:100
Formulation	PBS containing 0.02% Sodium Azide, 50% Glycerol, pH7.3.
Isotype	IgG
Storage Instruction	Store in a freezer at -20°C and avoid freeze-thaw cycles.

TARGET INFORMATION

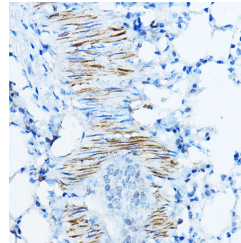
Gene ID	1674
Gene Symbol	DES
Uniprot ID	DESM_HUMAN
Immunogen	Recombinant fusion protein containing a sequence corresponding to amino acids 121-470 of human Desminin (NP_001918.3).
Immunogen Region	121-470
Specificity	
Immunogen Sequence	



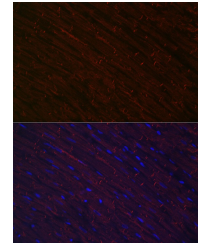
Western blot analysis of extracts of various cell lines, using Desminin antibody (STJ23369) at 1:500 dilution. Secondary antibody: HRP Goat Anti-rabbit IgG (H+L) at 1:10000 dilution. Lysates/proteins: 25µg per lane. Blocking buffer: 3% nonfat dry milk in TBST. Detection: ECL Basic Kit. Exposure time: 180s.



Immunohistochemistry of paraffin-embedded human colon using Desminin rabbit polyclonal antibody (STJ23369) at dilution of 1:100 (40x lens).



Immunohistochemistry of paraffin-embedded mouse lung using Desminin rabbit polyclonal antibody (STJ23369) at dilution of 1:100 (40x lens).



Immunofluorescence analysis of rat heart using Desminin rabbit polyclonal antibody (STJ23369) at dilution of 1:100 (40x lens). Blue: DAPI for nuclear staining.