

Anti-DDX58 antibody (C-Term) (STJ23363)

STJ23363

GENERAL INFORMATION

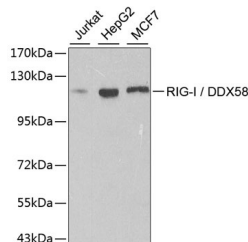
Product Type	Primary antibodies
Short Description	Rabbit polyclonal antibody anti-RIG-I/DDX58 (C-Term) is suitable for use in Western Blot, Immunohistochemistry, Immunofluorescence and Immunoprecipitation.
Applications	WB, IHC, IF, IP
Host/Source	Rabbit
Reactivity	Human, Mouse

PRODUCT PROPERTIES

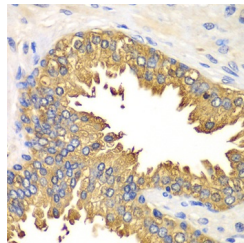
Clonality	Polyclonal
Clone ID	
Concentration	
Conjugation	Unconjugated
Purification	Affinity purification
Dilution Range	WB 1:500-1:2000 IHC 1:50-1:200 IF 1:20-1:100 IP 1:20-1:100
Formulation	PBS containing 0.02% Sodium Azide, 50% Glycerol, pH7.3.
Isotype	IgG
Storage Instruction	Store in a freezer at -20°C and avoid freeze-thaw cycles.

TARGET INFORMATION

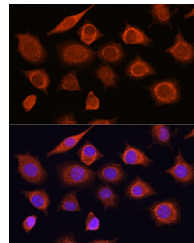
Gene ID	23586
Gene Symbol	DDX58
Uniprot ID	DDX58_HUMAN
Immunogen	A synthetic peptide corresponding to a sequence within amino acids 830 to the C-terminus of human RIG-I/DDX58 (NP_055129.2).
Immunogen Region	C-Term
Specificity	
Immunogen Sequence	



Western blot analysis of extracts of various cell lines, using RIG-I/ DDX58 antibody (STJ23363) at 1:500 dilution. Secondary antibody: HRP Goat Anti-rabbit IgG (H+L) at 1:10000 dilution. Lysates/proteins: 25ug per lane. Blocking buffer: 3% nonfat dry milk in TBST. Detection: ECL Basic Kit.



Immunohistochemistry of paraffin-embedded human prostate using RIG-I/ DDX58 antibody (STJ23363) at dilution of 1:100 (40x lens). Perform microwave antigen retrieval with 10 mM PBS buffer pH 7.2 before commencing with immunohistochemistry staining protocol.



Immunofluorescence analysis of L929 cells using RIG-I/ DDX58 rabbit polyclonal antibody (STJ23363) at dilution of 1:100. Blue: DAPI for nuclear staining.

This product is suitable for in-vitro studies under the RESEARCH USE ONLY [RUO] licence. This product must not be used as for diagnostic or other medical purposes.
St John's Laboratory Ltd, Knowledge Dock Business Centre, University Way, London, E16 2RD | Tel: 0208 223 3081