

Anti-CYP24A1 antibody (36-448) (STJ23319)

STJ23319

GENERAL INFORMATION

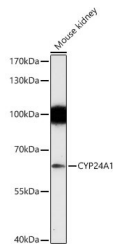
| | |
|--------------------------|--|
| Product Type | Primary antibodies |
| Short Description | Rabbit polyclonal antibody anti-CYP24A1 (36-448) is suitable for use in Western Blot, Immunohistochemistry and Immunofluorescence. |
| Applications | WB, IHC, IF |
| Host/Source | Rabbit |
| Reactivity | Human, Mouse, Rat |

PRODUCT PROPERTIES

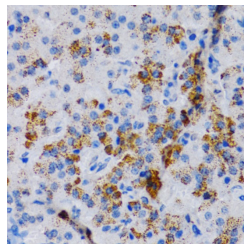
| | |
|----------------------------|---|
| Clonality | Polyclonal |
| Clone ID | |
| Concentration | |
| Conjugation | Unconjugated |
| Purification | Affinity purification |
| Dilution Range | WB 1:500-1:2000 IHC 1:50-1:100 IF 1:50-1:100 |
| Formulation | PBS containing 0.02% Sodium Azide, 50% Glycerol, pH7.3. |
| Isotype | IgG |
| Storage Instruction | Store in a freezer at -20°C and avoid freeze-thaw cycles. |

TARGET INFORMATION

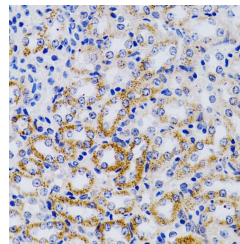
| | |
|---------------------------|---|
| Gene ID | 1591 |
| Gene Symbol | CYP24A1 |
| Uniprot ID | CP24A_HUMAN |
| Immunogen | Recombinant fusion protein containing a sequence corresponding to amino acids 36-448 of human CYP24A1 (NP_001122387.1). |
| Immunogen Region | 36-448 |
| Specificity | |
| Immunogen Sequence | |



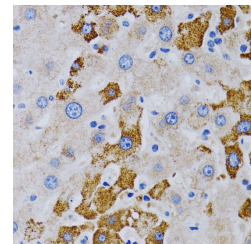
Western blot analysis of extracts of mouse kidney using CYP24A1 antibody (STJ23319) at 1:1000 dilution. Secondary antibody: HRP Goat Anti-rabbit IgG (H+L) at 1:10000 dilution. Lysates/proteins: 25µg per lane. Blocking buffer: 3% nonfat dry milk in TBST. Detection: ECL Enhanced Kit. Exposure time: 180s.



Immunohistochemistry of paraffin-embedded rat pancreas using CYP24A1 antibody (STJ23319) at dilution of 1:200 (40x lens). Perform microwave antigen retrieval with 10 mM PBS buffer pH 7. 2 before commencing with immunohistochemistry staining protocol.



Immunohistochemistry of paraffin-embedded mouse kidney using CYP24A1 antibody (STJ23319) at dilution of 1:200 (40x lens). Perform microwave antigen retrieval with 10 mM PBS buffer pH 7. 2 before commencing with immunohistochemistry staining protocol.



Immunohistochemistry of paraffin-embedded human liver cancer using CYP24A1 antibody (STJ23319) at dilution of 1:200 (40x lens). Perform microwave antigen retrieval with 10 mM PBS buffer pH 7. 2 before commencing with immunohistochemistry staining protocol.