

## Anti-CSH1 antibody (27-217) (STJ23239)

STJ23239

### GENERAL INFORMATION

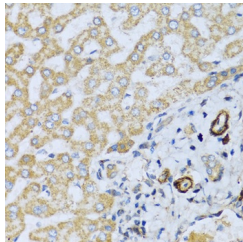
<b>Product Type</b>	Primary antibodies
<b>Short Description</b>	Rabbit polyclonal antibody anti-CSH1 (27-217) is suitable for use in Immunohistochemistry.
<b>Applications</b>	IHC
<b>Host/Source</b>	Rabbit
<b>Reactivity</b>	Human

### PRODUCT PROPERTIES

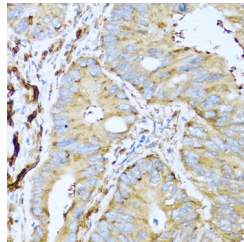
<b>Clonality</b>	Polyclonal
<b>Clone ID</b>	
<b>Concentration</b>	
<b>Conjugation</b>	Unconjugated
<b>Purification</b>	Affinity purification
<b>Dilution Range</b>	IHC 1:50-1:100
<b>Formulation</b>	PBS containing 0.02% Sodium Azide, 50% Glycerol, pH7.3.
<b>Isotype</b>	IgG
<b>Storage</b>	Store in a freezer at -20°C and avoid freeze-thaw cycles.
<b>Instruction</b>	

### TARGET INFORMATION

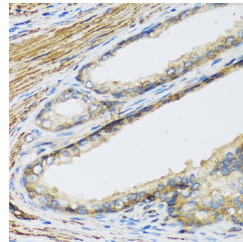
<b>Gene ID</b>	1442
<b>Gene Symbol</b>	CSH1
<b>Uniprot ID</b>	CSH1_HUMAN
<b>Immunogen</b>	Recombinant fusion protein containing a sequence corresponding to amino acids 27-217 of human Placental lactogen (Placental lactogen (CSH1)) (NP_001308.1).
<b>Immunogen Region</b>	27-217
<b>Specificity</b>	
<b>Immunogen Sequence</b>	



Immunohistochemistry of paraffin-embedded human liver using Placental lactogen (Placental lactogen (CSH1)) antibody (STJ23239) at dilution of 1:100 (40x lens).



Immunohistochemistry of paraffin-embedded human colon carcinoma using Placental lactogen (Placental lactogen (CSH1)) antibody (STJ23239) at dilution of 1:100 (40x lens).



Immunohistochemistry of paraffin-embedded human prostate using Placental lactogen (Placental lactogen (CSH1)) antibody (STJ23239) at dilution of 1:100 (40x lens).

This product is suitable for in-vitro studies under the RESEARCH USE ONLY [RUO] licence. This product must not be used as for diagnostic or other medical purposes.  
 St John's Laboratory Ltd, Knowledge Dock Business Centre, University Way, London, E16 2RD | Tel: 0208 223 3081