

## Anti-CSF2RA antibody (23-150) (STJ23238)

STJ23238

### GENERAL INFORMATION

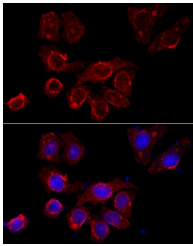
|                          |  |
|--------------------------|--|
| <b>Product Type</b>      | Primary antibodies   |
| <b>Short Description</b> | Rabbit polyclonal antibody anti-CSF2RA (23-150) is suitable for use in Immunofluorescence. |
| <b>Applications</b>      | IF   |
| <b>Host/Source</b>       | Rabbit   |
| <b>Reactivity</b>        | Human, Mouse   |

### PRODUCT PROPERTIES

|                            |   |
|----------------------------|---|
| <b>Clonality</b>           | Polyclonal  |
| <b>Clone ID</b>            |   |
| <b>Concentration</b>       |   |
| <b>Conjugation</b>         | Unconjugated  |
| <b>Purification</b>        | Affinity purification                                     |
| <b>Dilution Range</b>      | IF 1:50-1:200   |
| <b>Formulation</b>         | PBS containing 0.02% Sodium Azide, 50% Glycerol, pH7.3.   |
| <b>Isotype</b>             | IgG   |
| <b>Storage Instruction</b> | Store in a freezer at -20°C and avoid freeze-thaw cycles. |

### TARGET INFORMATION

|                           |  |
|---------------------------|--|
| <b>Gene ID</b>            | 1438   |
| <b>Gene Symbol</b>        | CSF2RA   |
| <b>Uniprot ID</b>         | CSF2R_HUMAN  |
| <b>Immunogen</b>          | Recombinant fusion protein containing a sequence corresponding to amino acids 23-150 of human CSF2RA (NP_001155001.1). |
| <b>Immunogen Region</b>   | 23-150   |
| <b>Specificity</b>        |  |
| <b>Immunogen Sequence</b> |  |



Immunofluorescence analysis of HeLa cells using CSF2RA antibody (STJ23238) at dilution of 1:100 (40x lens). Blue: DAPI for nuclear staining.

---

This product is suitable for in-vitro studies under the RESEARCH USE ONLY [RUO] licence. This product must not be used as for diagnostic or other medical purposes.  
St John's Laboratory Ltd, Knowledge Dock Business Centre, University Way, London, E16 2RD | Tel: 0208 223 3081