

Anti-COX5B antibody (32-129) (STJ23208)

STJ23208

GENERAL INFORMATION

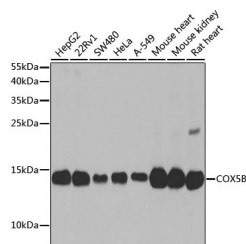
Product Type	Primary antibodies
Short Description	Rabbit polyclonal antibody anti-COX5B (32-129) is suitable for use in Western Blot, Immunohistochemistry, Immunofluorescence and Immunoprecipitation.
Applications	WB, IHC, IF, IP
Host/Source	Rabbit
Reactivity	Human, Mouse, Rat

PRODUCT PROPERTIES

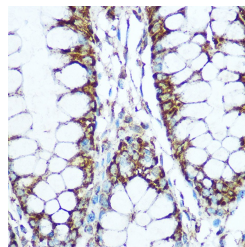
Clonality	Polyclonal
Clone ID	
Concentration	
Conjugation	Unconjugated
Purification	Affinity purification
Dilution Range	WB 1:500-1:2000 IHC 1:50-1:100 IF 1:50-1:100 IP 1:50-1:100
Formulation	PBS containing 0.02% Sodium Azide, 50% Glycerol, pH7.3.
Isotype	IgG
Storage	Store in a freezer at -20°C and avoid freeze-thaw cycles.
Instruction	

TARGET INFORMATION

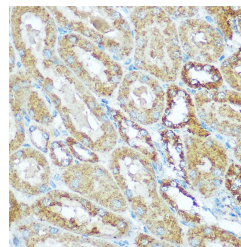
Gene ID	1329
Gene Symbol	COX5B
Uniprot ID	COX5B_HUMAN
Immunogen	Recombinant fusion protein containing a sequence corresponding to amino acids 32-129 of human COX5B (NP_001853.2).
Immunogen Region	32-129
Specificity	
Immunogen Sequence	



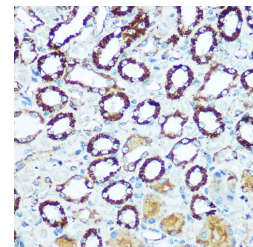
Western blot analysis of extracts of various cell lines, using COX5B antibody (STJ23208) at 1:1000 dilution. Secondary antibody: HRP Goat Anti-rabbit IgG (H+L) at 1:10000 dilution. Lysates/proteins: 25ug per lane. Blocking buffer: 3% nonfat dry milk in TBST. Detection: ECL Enhanced Kit. Exposure time: 30s.



Immunohistochemistry of paraffin-embedded human colon using COX5B rabbit polyclonal antibody (STJ23208) at dilution of 1:100 (40x lens).



Immunohistochemistry of paraffin-embedded mouse kidney using COX5B rabbit polyclonal antibody (STJ23208) at dilution of 1:100 (40x lens).



Immunohistochemistry of paraffin-embedded rat kidney using COX5B rabbit polyclonal antibody (STJ23208) at dilution of 1:100 (40x lens).

This product is suitable for in-vitro studies under the RESEARCH USE ONLY [RUO] licence. This product must not be used as for diagnostic or other medical purposes.
St John's Laboratory Ltd, Knowledge Dock Business Centre, University Way, London, E16 2RD | Tel: 0208 223 3081