

Anti-COL3A1 antibody (1217-1466) (STJ23192)

STJ23192

GENERAL INFORMATION

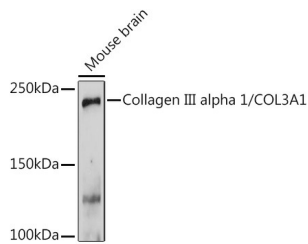
Product Type	Primary antibodies
Short Description	Rabbit polyclonal antibody anti-COL3A1 (1217-1466) is suitable for use in Western Blot, Immunohistochemistry and Immunofluorescence.
Applications	WB, IHC, IF
Host/Source	Rabbit
Reactivity	Human, Mouse, Rat

PRODUCT PROPERTIES

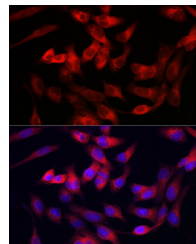
Clonality	Polyclonal
Clone ID	
Concentration	
Conjugation	Unconjugated
Purification	Affinity purification
Dilution Range	WB 1:500-1:2000 IHC 1:50-1:200 IF 1:50-1:200
Formulation	PBS containing 0.02% Sodium Azide, 50% Glycerol, pH7.3.
Isotype	IgG
Storage Instruction	Store in a freezer at -20°C and avoid freeze-thaw cycles.

TARGET INFORMATION

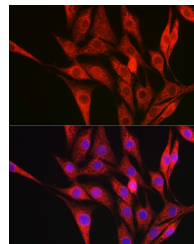
Gene ID	1281
Gene Symbol	COL3A1
Uniprot ID	CO3A1_HUMAN
Immunogen	Recombinant fusion protein containing a sequence corresponding to amino acids 1217-1466 of human COL3A1 (NP_000081.1).
Immunogen Region	1217-1466
Specificity	
Immunogen Sequence	



Western blot analysis of extracts of mouse brain, using Collagen III alpha 1/COL3A1 rabbit polyclonal antibody (STJ23192) at 1:1000 dilution. Secondary antibody: HRP Goat Anti-rabbit IgG (H+L) at 1:10000 dilution. Lysates/proteins: 25ug per lane. Blocking buffer: 3% nonfat dry milk in TBST. Detection: ECL Basic Kit. Exposure time: 180s.



Immunofluorescence analysis of RD cells using Collagen III alpha 1/COL3A1 antibody (STJ23192) at dilution of 1:100. Blue: DAPI for nuclear staining.



Immunofluorescence analysis of NIH/3T3 cells using Collagen III alpha 1/COL3A1 antibody (STJ23192) at dilution of 1:100. Blue: DAPI for nuclear staining.