

Anti-CLDN11 antibody (26-207) (STJ23156)

STJ23156

GENERAL INFORMATION

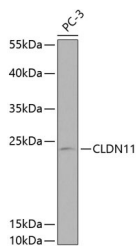
Product Type	Primary antibodies
Short Description	Rabbit polyclonal antibody anti-CLDN11 (26-207) is suitable for use in Western Blot and Immunofluorescence.
Applications	WB, IF
Host/Source	Rabbit
Reactivity	Human

PRODUCT PROPERTIES

Clonality	Polyclonal
Clone ID	
Concentration	
Conjugation	Unconjugated
Purification	Affinity purification
Dilution Range	WB 1:500-1:2000 IF 1:20-1:50
Formulation	PBS containing 0.02% Sodium Azide, 50% Glycerol, pH7.3.
Isotype	IgG
Storage Instruction	Store in a freezer at -20°C and avoid freeze-thaw cycles.

TARGET INFORMATION

Gene ID	5010
Gene Symbol	CLDN11
Uniprot ID	CLD11_HUMAN
Immunogen	Recombinant fusion protein containing a sequence corresponding to amino acids 26-207 of human CLDN11 (NP_005593.2).
Immunogen Region	26-207
Specificity	
Immunogen Sequence	



Western blot analysis of extracts of PC-3 cells, using CLDN11 antibody (STJ23156) at 1:1000 dilution. Secondary antibody: HRP Goat Anti-rabbit IgG (H+L) at 1:10000 dilution. Lysates/proteins: 25µg per lane. Blocking buffer: 3% nonfat dry milk in TBST.