

Anti-CDH23 antibody (STJ23044)

STJ23044

GENERAL INFORMATION

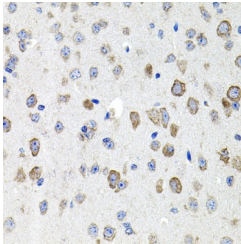
Product Type	Primary antibodies
Short Description	Rabbit polyclonal antibody anti-CDH23 is suitable for use in Western Blot and Immunohistochemistry.
Applications	WB, IHC
Host/Source	Rabbit
Reactivity	Human, Mouse

PRODUCT PROPERTIES

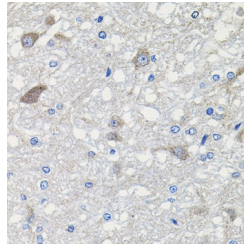
Clonality	Polyclonal
Clone ID	
Concentration	
Conjugation	Unconjugated
Purification	Affinity purification
Dilution Range	WB 1:500-1:2000 IHC 1:100-1:200
Formulation	PBS containing 0.02% Sodium Azide, 50% Glycerol, pH7.3.
Isotype	IgG
Storage Instruction	Store in a freezer at -20°C and avoid freeze-thaw cycles.

TARGET INFORMATION

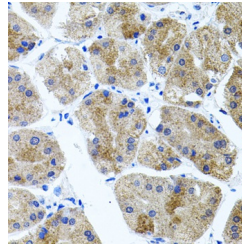
Gene ID	64072
Gene Symbol	CDH23
Uniprot ID	CAD23_HUMAN
Immunogen	Recombinant protein of human CDH23
Immunogen Region	
Specificity	
Immunogen Sequence	



Immunohistochemistry of paraffin-embedded mouse brain using CDH23 antibody (STJ23044) at dilution of 1:100 (40x lens).



Immunohistochemistry of paraffin-embedded rat brain using CDH23 antibody (STJ23044) at dilution of 1:100 (40x lens).



Immunohistochemistry of paraffin-embedded human stomach using CDH23 antibody (STJ23044) at dilution of 1:100 (40x lens).

This product is suitable for in-vitro studies under the RESEARCH USE ONLY [RUO] licence. This product must not be used as for diagnostic or other medical purposes.
St John's Laboratory Ltd, Knowledge Dock Business Centre, University Way, London, E16 2RD | Tel: 0208 223 3081