

Anti-CBX3 antibody (1-183) (STJ22921)

STJ22921

GENERAL INFORMATION

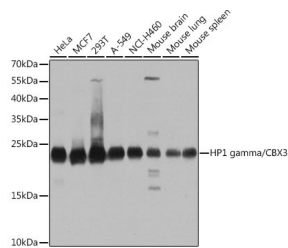
Product Type	Primary antibodies
Short Description	Rabbit polyclonal antibody anti-CBX3 (1-183) is suitable for use in Western Blot, Immunohistochemistry and Immunofluorescence.
Applications	WB, IHC, IF
Host/Source	Rabbit
Reactivity	Human, Mouse, Rat

PRODUCT PROPERTIES

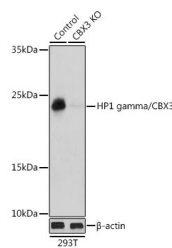
Clonality	Polyclonal
Clone ID	
Concentration	
Conjugation	Unconjugated
Purification	Affinity purification
Dilution Range	WB 1:500-1:2000 IHC 1:50-1:200 IF 1:50-1:200
Formulation	PBS containing 0.02% Sodium Azide, 50% Glycerol, pH7.3.
Isotype	IgG
Storage Instruction	Store in a freezer at -20°C and avoid freeze-thaw cycles.

TARGET INFORMATION

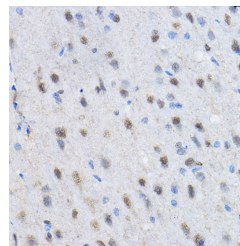
Gene ID	11335
Gene Symbol	CBX3
Uniprot ID	CBX3_HUMAN
Immunogen	Recombinant fusion protein containing a sequence corresponding to amino acids 1-183 of human HP1 gamma/HP1 gamma/CBX3 (NP_009207.2).
Immunogen Region	1-183
Specificity	
Immunogen Sequence	



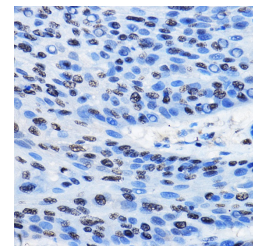
Western blot analysis of extracts of various cell lines, using HP1 gamma/HP1 gamma/CBX3 antibody (STJ22921) at 1:1000 dilution. Secondary antibody: HRP Goat Anti-rabbit IgG (H+L) at 1:10000 dilution. Lysates/proteins: 25ug per lane. Blocking buffer: 3% nonfat dry milk in TBST. Detection: ECL Basic Kit. Exposure time: 5s.



Western blot analysis of extracts from normal (control) and HP1 gamma/HP1 gamma/CBX3 knockout (KO) 293T cells, using HP1 gamma/HP1 gamma/CBX3 antibody (STJ22921) at 1:1000 dilution. Secondary antibody: HRP Goat Anti-rabbit IgG (H+L) at 1:10000 dilution. Lysates/proteins: 25ug per lane. Blocking buffer: 3% nonfat dry milk in TBST. Detection: ECL Basic Kit. Exposure time: 1s.



Immunohistochemistry of paraffin-embedded rat brain using [KO Validated] HP1 gamma/HP1 gamma/CBX3 rabbit polyclonal antibody (STJ22921) at dilution of 1:50 (40x lens). Perform high pressure antigen retrieval with 10 mM citrate buffer pH 6.0 before commencing with immunohistochemistry staining protocol.



Immunohistochemistry of paraffin-embedded human esophageal cancer using [KO Validated] HP1 gamma/HP1 gamma/CBX3 rabbit polyclonal antibody (STJ22921) at dilution of 1:50 (40x lens). Perform high pressure antigen retrieval with 10 mM citrate buffer pH 6.0 before commencing with immunohistochemistry staining protocol.

This product is suitable for in-vitro studies under the RESEARCH USE ONLY [RUO] licence. This product must not be used as for diagnostic or other medical purposes.
St John's Laboratory Ltd, Knowledge Dock Business Centre, University Way, London, E16 2RD | Tel: 0208 223 3081