

Anti-CAST antibody (STJ22910)

STJ22910

GENERAL INFORMATION

Product Type	Primary antibodies
Short Description	Rabbit polyclonal antibody anti-CAST is suitable for use in Western Blot and Immunohistochemistry.
Applications	WB, IHC
Host/Source	Rabbit
Reactivity	Human, Mouse, Rat

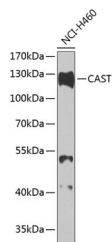
PRODUCT PROPERTIES

Clonality	Polyclonal
Clone ID	
Concentration	
Conjugation	Unconjugated
Purification	Affinity purification
Dilution Range	WB 1:200-1:2000 IHC 1:50-1:200
Formulation	PBS containing 0.02% Sodium Azide, 50% Glycerol, pH7.3.
Isotype	IgG
Storage Instruction	Store in a freezer at -20°C and avoid freeze-thaw cycles.

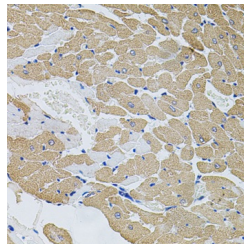
TARGET INFORMATION

Gene ID	831
Gene Symbol	CAST
Uniprot ID	ICAL_HUMAN
Immunogen	A synthetic peptide corresponding to a sequence within amino acids 600 to the C-terminus of human CAST (NP_001177371.1).

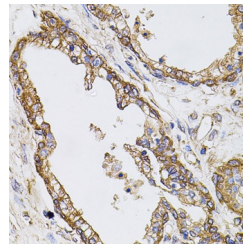
**Immunogen Region
Specificity
Immunogen
Sequence**



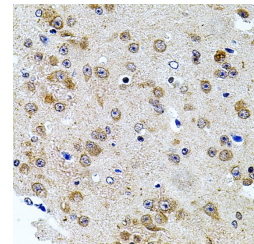
Western blot analysis of extracts of H460 cells, using CAST antibody (STJ22910) at 1:1000 dilution. Secondary antibody: HRP Goat Anti-rabbit IgG (H+L) at 1:10000 dilution. Lysates/proteins: 25µg per lane. Blocking buffer: 3% nonfat dry milk in TBST. Detection: ECL Basic Kit. Exposure time: 90s.



Immunohistochemistry of paraffin-embedded rat heart using CAST antibody (STJ22910) at dilution of 1:100 (40x lens).



Immunohistochemistry of paraffin-embedded human prostate using CAST antibody (STJ22910) at dilution of 1:100 (40x lens).



Immunohistochemistry of paraffin-embedded mouse brain using CAST antibody (STJ22910) at dilution of 1:100 (40x lens).