

Anti-BTRC antibody (50-340) (STJ22845)

STJ22845

GENERAL INFORMATION

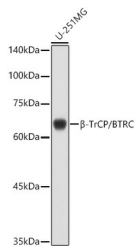
| | |
|--------------------------|--|
| Product Type | Primary antibodies |
| Short Description | Rabbit polyclonal antibody anti-Beta-TRCP (50-340) is suitable for use in Western Blot, Immunohistochemistry and Immunofluorescence. |
| Applications | WB, IHC, IF |
| Host/Source | Rabbit |
| Reactivity | Human, Mouse, Rat |

PRODUCT PROPERTIES

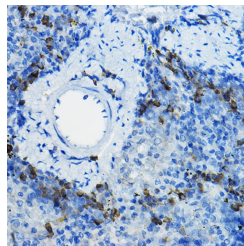
| | |
|----------------------------|---|
| Clonality | Polyclonal |
| Clone ID | |
| Concentration | |
| Conjugation | Unconjugated |
| Purification | Affinity purification |
| Dilution Range | WB 1:500-1:2000 IHC 1:50-1:200 IF 1:50-1:100 |
| Formulation | PBS containing 0.02% Sodium Azide, 50% Glycerol, pH7.3. |
| Isotype | IgG |
| Storage Instruction | Store in a freezer at -20°C and avoid freeze-thaw cycles. |

TARGET INFORMATION

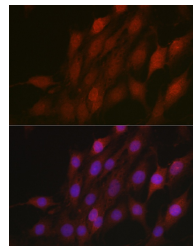
| | |
|---------------------------|--|
| Gene ID | 8945 |
| Gene Symbol | BTRC |
| Uniprot ID | FBW1A_HUMAN |
| Immunogen | Recombinant fusion protein containing a sequence corresponding to amino acids 50-340 of human Beta-TRCP (NP_378663.1). |
| Immunogen Region | 50-340 |
| Specificity | |
| Immunogen Sequence | |



Western blot analysis of extracts of U-251MG cells, using Beta-TrCP/BTRC antibody (STJ22845) at 1:1000 dilution. Secondary antibody: HRP Goat Anti-rabbit IgG (H+L) at 1:10000 dilution. Lysates/proteins: 25ug per lane. Blocking buffer: 3% nonfat dry milk in TBST. Detection: ECL Enhanced Kit. Exposure time: 180s.



Immunohistochemistry of paraffin-embedded mouse spleen using Beta-TrCP/BTRC rabbit polyclonal antibody (STJ22845) at dilution of 1:100 (40x lens). Perform high pressure antigen retrieval with 10 mM citrate buffer pH 6.0 before commencing with immunohistochemistry staining protocol.



Immunofluorescence analysis of C6 cells using Beta-TrCP/BTRC rabbit polyclonal antibody (STJ22845) at dilution of 1:100 (40x lens). Blue: DAPI for nuclear staining.