

Anti-BSG antibody (30-200) (STJ22839)

STJ22839

GENERAL INFORMATION

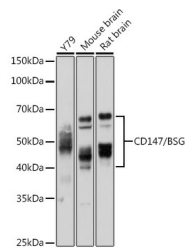
Product Type	Primary antibodies
Short Description	Rabbit polyclonal antibody anti-BSG (30-200) is suitable for use in Western Blot, Immunohistochemistry and Immunoprecipitation.
Applications	WB, IHC, IP
Host/Source	Rabbit
Reactivity	Human, Mouse, Rat

PRODUCT PROPERTIES

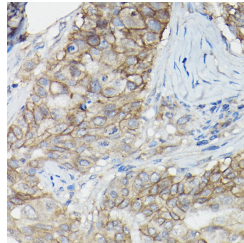
Clonality	Polyclonal
Clone ID	
Concentration	
Conjugation	Unconjugated
Purification	Affinity purification
Dilution Range	WB 1:500-1:2000 IHC 1:50-1:200 IP 1:50-1:200
Formulation	PBS containing 0.02% Sodium Azide, 50% Glycerol, pH7.3.
Isotype	IgG
Storage Instruction	Store in a freezer at -20°C and avoid freeze-thaw cycles.

TARGET INFORMATION

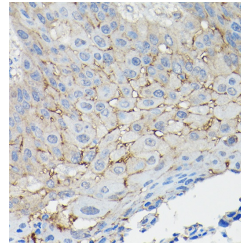
Gene ID	682
Gene Symbol	BSG
Uniprot ID	BASL_HUMAN
Immunogen	Recombinant fusion protein containing a sequence corresponding to amino acids 30-200 of human CD147/CD147/BSG (NP_940991.1).
Immunogen Region	30-200
Specificity	
Immunogen Sequence	



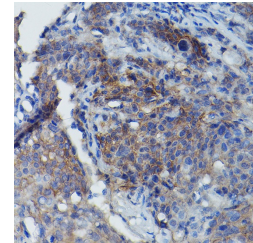
Western blot analysis of extracts of various cell lines, using CD147/CD147/BSG antibody (STJ22839) at 1:1000 dilution. Secondary antibody: HRP Goat Anti-rabbit IgG (H+L) at 1:10000 dilution. Lysates/proteins: 25µg per lane. Blocking buffer: 3% nonfat dry milk in TBST. Detection: ECL Basic Kit. Exposure time: 5s.



Immunohistochemistry of paraffin-embedded human breast cancer using CD147/CD147/BSG rabbit polyclonal antibody (STJ22839) at dilution of 1:100 (40x lens).



Immunohistochemistry of paraffin-embedded human esophageal cancer using CD147/CD147/BSG rabbit polyclonal antibody (STJ22839) at dilution of 1:100 (40x lens).



Immunohistochemistry of paraffin-embedded human cervix cancer using BSG rabbit polyclonal antibody (STJ22839) at dilution of 1:100 (40x lens).