

Anti-ALPL antibody (20-270) (STJ22595)

STJ22595

GENERAL INFORMATION

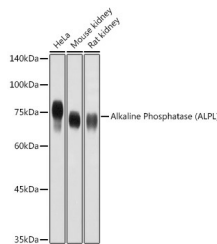
Product Type	Primary antibodies
Short Description	Rabbit polyclonal antibody anti-ALPL (20-270) is suitable for use in Western Blot and Immunohistochemistry.
Applications	WB, IHC
Host/Source	Rabbit
Reactivity	Human, Mouse, Rat

PRODUCT PROPERTIES

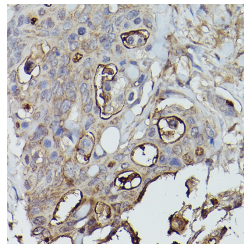
Clonality	Polyclonal
Clone ID	
Concentration	
Conjugation	Unconjugated
Purification	Affinity purification
Dilution Range	WB 1:500-1:2000 IHC 1:50-1:200
Formulation	PBS containing 0.02% Sodium Azide, 50% Glycerol, pH7.3.
Isotype	IgG
Storage Instruction	Store in a freezer at -20°C and avoid freeze-thaw cycles.

TARGET INFORMATION

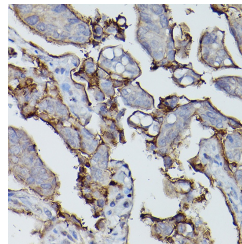
Gene ID	249
Gene Symbol	ALPL
Uniprot ID	PPBT_HUMAN
Immunogen	Recombinant fusion protein containing a sequence corresponding to amino acids 20-270 of human Alkaline Phosphatase (Alkaline Phosphatase (ALPL)) (NP_000469.3).
Immunogen Region	20-270
Specificity	
Immunogen Sequence	



Western blot analysis of extracts of various cell lines, using Alkaline Phosphatase (ALPL) antibody (STJ22595) at 1:1000 dilution. Secondary antibody: HRP Goat Anti-rabbit IgG (H+L) at 1:10000 dilution. Lysates/proteins: 25µg per lane. Blocking buffer: 3% nonfat dry milk in TBST. Detection: ECL Basic Kit. Exposure time: 10s.



Immunohistochemistry of paraffin-embedded human colon carcinoma using Alkaline Phosphatase (ALPL) rabbit polyclonal antibody (STJ22595) at dilution of 1:150 (40x lens). Perform high pressure antigen retrieval with 10 mM citrate buffer pH 6.0 before commencing with immunohistochemistry staining protocol.



Immunohistochemistry of paraffin-embedded human lung cancer using Alkaline Phosphatase (ALPL) rabbit polyclonal antibody (STJ22595) at dilution of 1:150 (40x lens). Perform high pressure antigen retrieval with 10 mM citrate buffer pH 6.0 before commencing with immunohistochemistry staining protocol.