

Anti-Phospho-STAT4-Y693 antibody (STJ22416)

STJ22416

GENERAL INFORMATION

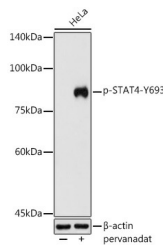
Product Type	Primary antibodies
Short Description	Rabbit polyclonal antibody anti-Phospho-STAT4-Y693 is suitable for use in Western Blot and Immunohistochemistry.
Applications	WB, IHC
Host/Source	Rabbit
Reactivity	Human

PRODUCT PROPERTIES

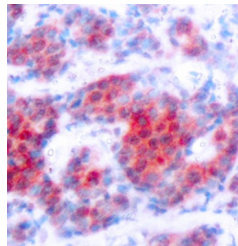
Clonality	Polyclonal
Clone ID	
Concentration	
Conjugation	Unconjugated
Purification	Affinity purification
Dilution Range	WB 1:500-1:2000 IHC 1:50-1:100
Formulation	PBS containing 0.02% Sodium Azide, 50% Glycerol, pH7.3.
Isotype	IgG
Storage Instruction	Store in a freezer at -20°C and avoid freeze-thaw cycles.

TARGET INFORMATION

Gene ID	6775
Gene Symbol	STAT4
Uniprot ID	STAT4_HUMAN
Immunogen	A phospho specific peptide corresponding to residues surrounding Y693 of human STAT4
Immunogen Region	
Specificity	
Immunogen Sequence	



Western blot analysis of extracts of HeLa cells, using Phospho-STAT4-Y693 antibody (STJ22416) at 1:500 dilution. HeLa cells were treated by Pervanadate (1 mM) at 37 °C for 30 minutes after serum-starvation overnight. Secondary antibody: HRP Goat Anti-rabbit IgG (H+L) at 1:10000 dilution. Lysates/proteins: 25µg per lane. Blocking buffer: 3% nonfat dry milk in TBST. Detection: ECL Basic Kit. Exposure time: 30s.



Immunohistochemistry of paraffin-embedded human breast carcinoma using Phospho-STAT4-Y693 antibody (STJ22416). Perform microwave antigen retrieval with 10 mM Tris/EDTA buffer pH 9.0 before commencing with immunohistochemistry staining protocol.

This product is suitable for in-vitro studies under the RESEARCH USE ONLY [RUO] licence. This product must not be used as for diagnostic or other medical purposes.
St John's Laboratory Ltd, Knowledge Dock Business Centre, University Way, London, E16 2RD | Tel: 0208 223 3081