

Anti-Phospho-STAT1-S727 antibody (STJ22411)

STJ22411

GENERAL INFORMATION

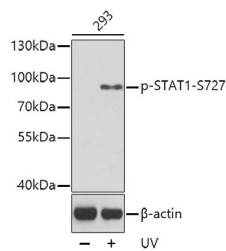
Product Type	Primary antibodies
Short Description	Rabbit polyclonal antibody anti-Phospho-STAT1-S727 is suitable for use in Western Blot, Immunohistochemistry and Immunofluorescence.
Applications	WB, IHC, IF
Host/Source	Rabbit
Reactivity	Human, Mouse, Rat

PRODUCT PROPERTIES

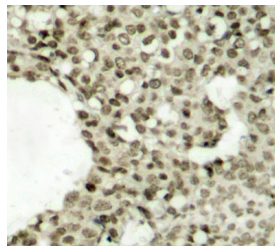
Clonality	Polyclonal
Clone ID	
Concentration	
Conjugation	Unconjugated
Purification	Affinity purification
Dilution Range	WB 1:500-1:2000 IHC 1:50-1:100 IF 1:100-1:200
Formulation	PBS containing 0.02% Sodium Azide, 50% Glycerol, pH7.3.
Isotype	IgG
Storage Instruction	Store in a freezer at -20°C and avoid freeze-thaw cycles.

TARGET INFORMATION

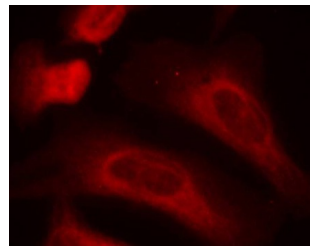
Gene ID	6772
Gene Symbol	STAT1
Uniprot ID	STAT1_HUMAN
Immunogen	A phospho specific peptide corresponding to residues surrounding S727 of human STAT1
Immunogen Region	
Specificity	
Immunogen Sequence	



Western blot analysis of extracts from 293 cells, using Phospho-STAT1-S727 antibody (STJ22411). Secondary antibody: HRP Goat Anti-rabbit IgG (H+L) at 1:10000 dilution. Lysates/proteins: 25ug per lane. Blocking buffer: 3% BSA.



Immunohistochemistry of paraffin-embedded human breast carcinoma tissue, using Phospho-STAT1-S727 antibody (STJ22411).



Immunofluorescence analysis of methanol-fixed HeLa cells using Phospho-STAT1-S727 antibody (STJ22411).

This product is suitable for in-vitro studies under the RESEARCH USE ONLY [RUO] licence. This product must not be used as for diagnostic or other medical purposes.
St John's Laboratory Ltd, Knowledge Dock Business Centre, University Way, London, E16 2RD | Tel: 0208 223 3081