

Anti-Phospho-SMC1A-S957 antibody (STJ22400)

STJ22400

GENERAL INFORMATION

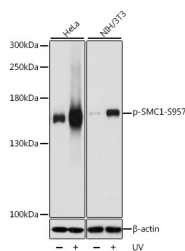
Product Type	Primary antibodies
Short Description	Rabbit polyclonal antibody anti-Phospho-SMC1A-S957 is suitable for use in Western Blot, Immunohistochemistry, Immunofluorescence and Immunoprecipitation.
Applications	WB, IHC, IF, IP
Host/Source	Rabbit
Reactivity	Human, Mouse, Rat

PRODUCT PROPERTIES

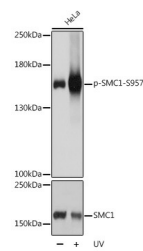
Clonality	Polyclonal
Clone ID	
Concentration	
Conjugation	Unconjugated
Purification	Affinity purification
Dilution Range	WB 1:500-1:2000 IHC 1:50-1:200 IF 1:20-1:100 IP 1:50-1:100
Formulation	PBS containing 0.02% Sodium Azide, 50% Glycerol, pH7.3.
Isotype	IgG
Storage Instruction	Store in a freezer at -20°C and avoid freeze-thaw cycles.

TARGET INFORMATION

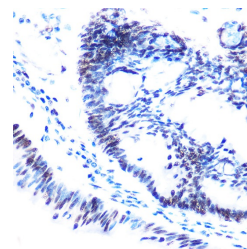
Gene ID	8243
Gene Symbol	SMC1A
Uniprot ID	SMC1A_HUMAN
Immunogen	A synthetic phosphorylated peptide around S957 of human SMC1A (NP_006297.2).
Region	
Specificity	
Immunogen Sequence	



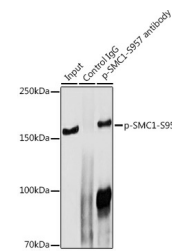
Western blot analysis of extracts of various cell lines, using Phospho-SMC1-S957 antibody (STJ22400) at 1:1000 dilution. HeLa and NIH/3T3 cells were treated by UV for 15-30 minutes. Secondary antibody: HRP Goat Anti-rabbit IgG (H+L) at 1:10000 dilution. Lysates/proteins: 25ug per lane. Blocking buffer: 3% BSA. Detection: ECL Basic Kit. Exposure time: 3s.



Western blot analysis of extracts of HeLa cells, using Phospho-SMC1-S957 polyclonal antibody (STJ22400) at 1:1000 dilution or SMC1A antibody (STJ22098). HeLa cells were treated by UV at room temperature for 15-30 minutes. Secondary antibody: HRP Goat Anti-rabbit IgG (H+L) at 1:10000 dilution. Lysates/proteins: 25ug per lane. Blocking buffer: 3% BSA. Detection: ECL Basic Kit. Exposure time: 3s.



Immunohistochemistry of paraffin-embedded human colon carcinoma using Phospho-SMC1-S957 rabbit polyclonal antibody (STJ22400) at dilution of 1:100 (40x lens). Perform high pressure antigen retrieval with 10 mM citrate buffer pH 6.0 before commencing with immunohistochemistry staining protocol.



Immunoprecipitation analysis of 300ug extracts of HeLa cells using 3ug Phospho-SMC1-S957 antibody (STJ22400). Western blot was performed from the immunoprecipitate using Phospho-SMC1-S957 antibody (STJ22400) at a dilution of 1:1000.

This product is suitable for in-vitro studies under the RESEARCH USE ONLY [RUO] licence. This product must not be used as for diagnostic or other medical purposes.
St John's Laboratory Ltd, Knowledge Dock Business Centre, University Way, London, E16 2RD | Tel: 0208 223 3081