

Anti-Phospho-PRKCA/PRKCB-T638/641 antibody (STJ22341)

STJ22341

GENERAL INFORMATION

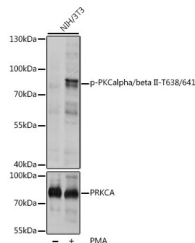
Product Type	Primary antibodies
Short Description	Rabbit polyclonal antibody anti-Phospho-PKAlpha/beta II-T638/641 is suitable for use in Western Blot, Immunohistochemistry and Immunofluorescence.
Applications	WB, IHC, IF
Host/Source	Rabbit
Reactivity	Human, Mouse, Rat

PRODUCT PROPERTIES

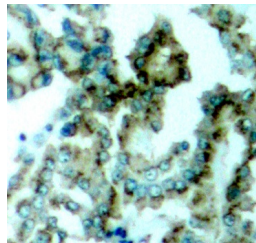
Clonality	Polyclonal
Clone ID	
Concentration	
Conjugation	Unconjugated
Purification	Affinity purification
Dilution Range	WB 1:500-1:2000 IHC 1:50-1:100 IF 1:100-1:200
Formulation	PBS containing 0.02% Sodium Azide, 50% Glycerol, pH7.3.
Isotype	IgG
Storage	Store in a freezer at -20°C and avoid freeze-thaw cycles.
Instruction	

TARGET INFORMATION

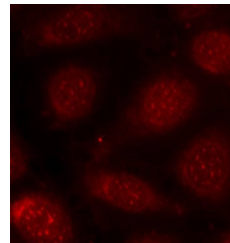
Gene ID	5578 5579
Gene Symbol	PRKCA PRKCB
Uniprot ID	KPCA_HUMAN KPCB_HUMAN
Immunogen	A phospho specific peptide corresponding to residues surrounding T638/641 of human PKAlpha/beta II
Immunogen Region	
Specificity	
Immunogen Sequence	



Western blot analysis of extracts of NIH/3T3 cells, using Phospho-PRKAlpha/beta II-T638/641 polyclonal antibody (STJ22341) at 1:1000 dilution or PRKCA antibody (STJ298482). NIH/3T3 cells were treated by PMA/TFA (200nM) for 30 minutes after serum-starvation overnight. Secondary antibody: HRP Goat Anti-rabbit IgG (H+L) at 1:10000 dilution. Lysates/proteins: 25ug per lane. Blocking buffer: 3% BSA. Detection: ECL Basic Kit. Exposure time: 1s.



Immunohistochemistry of paraffin-embedded human lung carcinoma tissue, using Phospho-PRKAlpha/beta II-T638/641 antibody (STJ22341).



Immunofluorescence analysis of methanol-fixed MCF-7 cells using Phospho-PRKCB-T641 antibody (STJ22341).

This product is suitable for in-vitro studies under the RESEARCH USE ONLY [RUO] licence. This product must not be used as for diagnostic or other medical purposes.
St John's Laboratory Ltd, Knowledge Dock Business Centre, University Way, London, E16 2RD | Tel: 0208 223 3081