

Anti-Phospho-NFKB1-S337 antibody (STJ22308)

STJ22308

GENERAL INFORMATION

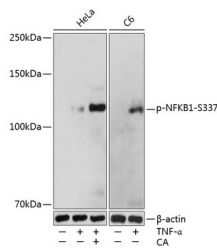
Product Type	Primary antibodies
Short Description	Rabbit polyclonal antibody anti-Phospho-NFKB1-S337 is suitable for use in Western Blot.
Applications	WB
Host/Source	Rabbit
Reactivity	Human, Mouse, Rat

PRODUCT PROPERTIES

Clonality	Polyclonal
Clone ID	
Concentration	
Conjugation	Unconjugated
Purification	Affinity purification
Dilution Range	WB 1:500-1:2000
Formulation	PBS containing 0.02% Sodium Azide, 50% Glycerol, pH7.3.
Isotype	IgG
Storage Instruction	Store in a freezer at -20°C and avoid freeze-thaw cycles.

TARGET INFORMATION

Gene ID	4790
Gene Symbol	NFKB1
Uniprot ID	NFKB1_HUMAN
Immunogen	A phospho specific peptide corresponding to residues surrounding S337 of human NFKB1
Immunogen Region	
Specificity	
Immunogen Sequence	



Western blot analysis of extracts of various cell lines, using Phospho-NFKB1-S337 polyclonal antibody (STJ22308) at 1:1000 dilution. HeLa cells were treated by TNF-Alpha (20 ng/mL) and Calyculin A (100 nM) at 37 °C for 10 minutes. C6 cells were treated by TNF-Alpha (20 ng/mL) at 37 °C for 10 minutes. Secondary antibody: HRP Goat Anti-rabbit IgG (H+L) at 1:10000 dilution. Lysates/proteins: 25ug per lane. Blocking buffer: 3% nonfat dry milk in TBST. Detection: ECL Basic Kit. Exposure time: 1s.

This product is suitable for in-vitro studies under the RESEARCH USE ONLY [RUO] licence. This product must not be used as for diagnostic or other medical purposes.
 St John's Laboratory Ltd, Knowledge Dock Business Centre, University Way, London, E16 2RD | Tel: 0208 223 3081