

Anti-Phospho-MAPT-S404 antibody (STJ22272)

STJ22272

GENERAL INFORMATION

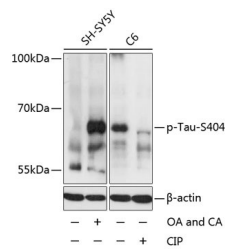
Product Type	Primary antibodies
Short Description	Rabbit polyclonal antibody anti-Phospho-Tau-S404 is suitable for use in Western Blot, Immunohistochemistry and Immunofluorescence.
Applications	WB, IHC, IF
Host/Source	Rabbit
Reactivity	Human, Mouse, Rat

PRODUCT PROPERTIES

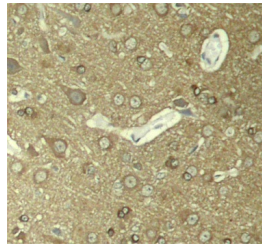
Clonality	Polyclonal
Clone ID	
Concentration	
Conjugation	Unconjugated
Purification	Affinity purification
Dilution Range	WB 1:500-1:2000 IHC 1:50-1:100 IF 1:100-1:200
Formulation	PBS containing 0.02% Sodium Azide, 50% Glycerol, pH7.3.
Isotype	IgG
Storage Instruction	Store in a freezer at -20°C and avoid freeze-thaw cycles.

TARGET INFORMATION

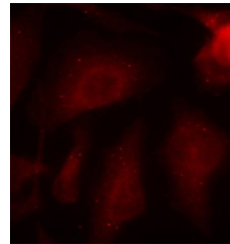
Gene ID	4137
Gene Symbol	MAPT
Uniprot ID	TAU_HUMAN
Immunogen	A phospho specific peptide corresponding to residues surrounding S404 of human Tau
Immunogen Region	
Specificity	
Immunogen Sequence	



Western blot analysis of extracts of SH-SY5Y and C6 cells, using Phospho-Tau-S404 antibody (STJ22272) at 1:2000 dilution. SH-SY5Y cells were treated by Okadaic Acid (100nM) for 1 hour and Calyculin A (100nM) for 30 minutes after serum-starvation overnight. C6 cell lysates were treated by CIP at 37°C for 1 hour. Secondary antibody: HRP Goat Anti-rabbit IgG (H+L) at 1:10000 dilution. Lysates/proteins: 25ug per lane. Blocking buffer: 3% BSA. Detection: ECL Basic Kit. Exposure time: 3s.



Immunohistochemistry of paraffin-embedded rat hippocampal region tissue from a model with Alzheimer, using Phospho-Tau-S404 antibody (STJ22272).



Immunofluorescence analysis of methanol-fixed HeLa cells using Phospho-Tau-S404 antibody (STJ22272).

This product is suitable for in-vitro studies under the RESEARCH USE ONLY [RUO] licence. This product must not be used as for diagnostic or other medical purposes.
St John's Laboratory Ltd, Knowledge Dock Business Centre, University Way, London, E16 2RD | Tel: 0208 223 3081