

Anti-Phospho-MAP3K5-S1033 antibody (STJ22248)

STJ22248

GENERAL INFORMATION

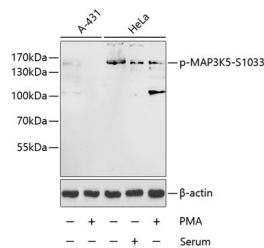
Product Type	Primary antibodies
Short Description	Rabbit polyclonal antibody anti-Phospho-MAP3K5-S1033 is suitable for use in Western Blot.
Applications	WB
Host/Source	Rabbit
Reactivity	Human, Mouse, Rat

PRODUCT PROPERTIES

Clonality	Polyclonal
Clone ID	
Concentration	
Conjugation	Unconjugated
Purification	Affinity purification
Dilution Range	WB 1:500-1:2000
Formulation	PBS containing 0.02% Sodium Azide, 50% Glycerol, pH7.3.
Isotype	IgG
Storage Instruction	Store in a freezer at -20°C and avoid freeze-thaw cycles.

TARGET INFORMATION

Gene ID	4217
Gene Symbol	MAP3K5
Uniprot ID	M3K5_HUMAN
Immunogen	A phospho specific peptide corresponding to residues surrounding S1033 of human MAP3K5
Immunogen Region	
Specificity	
Immunogen Sequence	



Western blot analysis of extracts of A-431 and HeLa cells, using Phospho-MAP3K5-S1033 antibody (STJ22248) at 1:1000 dilution. A431 cells were treated by PMA/TPA (200nM). HeLa cells were treated by 10% FBS or treated by PMA/TPA (200nM) for 15 minutes after serum-starvation overnight. Secondary antibody: HRP Goat Anti-rabbit IgG (H+L) at 1:10000 dilution. Lysates/proteins: 25ug per lane. Blocking buffer: 3% BSA.

This product is suitable for in-vitro studies under the RESEARCH USE ONLY [RUO] licence. This product must not be used as for diagnostic or other medical purposes.
 St John's Laboratory Ltd, Knowledge Dock Business Centre, University Way, London, E16 2RD | Tel: 0208 223 3081