

Anti-Phospho-MAP2K3/MAP2K6-S207/S189 antibody (STJ22246)

STJ22246

GENERAL INFORMATION

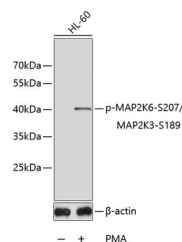
Product Type	Primary antibodies
Short Description	Rabbit polyclonal antibody anti-Phospho-MAP2K3/MAP2K6-S207/S189 is suitable for use in Western Blot and Immunofluorescence.
Applications	WB, IF
Host/Source	Rabbit
Reactivity	Human, Mouse, Rat

PRODUCT PROPERTIES

Clonality	Polyclonal
Clone ID	
Concentration	
Conjugation	Unconjugated
Purification	Affinity purification
Dilution Range	WB 1:500-1:2000 IF 1:50-1:200
Formulation	PBS containing 0.02% Sodium Azide, 50% Glycerol, pH7.3.
Isotype	IgG
Storage Instruction	Store in a freezer at -20°C and avoid freeze-thaw cycles.

TARGET INFORMATION

Gene ID	5606 5608
Gene Symbol	MAP2K3 MAP2K6
Uniprot ID	MP2K3_HUMAN MP2K6_HUMAN
Immunogen	A synthetic phosphorylated peptide around S207 of human MAP2K6 (NP_002749.2).
Immunogen Region	
Specificity	
Immunogen Sequence	



Western blot analysis of extracts of HL60 cell lines, using Phospho-MAP2K6-S207/MAP2K3-S189 antibody (STJ22246). Secondary antibody: HRP Goat Anti-rabbit IgG (H+L) at 1:10000 dilution. Lysates/proteins: 25ug per lane. Blocking buffer: 3% BSA.

This product is suitable for in-vitro studies under the RESEARCH USE ONLY [RUO] licence. This product must not be used as for diagnostic or other medical purposes.
St John's Laboratory Ltd, Knowledge Dock Business Centre, University Way, London, E16 2RD | Tel: 0208 223 3081