

Anti-Phospho-MAP2K1-T286 antibody (STJ22233)

STJ22233

GENERAL INFORMATION

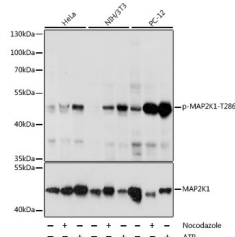
Product Type	Primary antibodies
Short Description	Rabbit polyclonal antibody anti-Phospho-MAP2K1-T286 is suitable for use in Western Blot.
Applications	WB
Host/Source	Rabbit
Reactivity	Human, Mouse, Rat

PRODUCT PROPERTIES

Clonality	Polyclonal
Clone ID	
Concentration	
Conjugation	Unconjugated
Purification	Affinity purification
Dilution Range	WB 1:500-1:2000
Formulation	PBS containing 0.02% Sodium Azide, 50% Glycerol, pH7.3.
Isotype	IgG
Storage Instruction	Store in a freezer at -20°C and avoid freeze-thaw cycles.

TARGET INFORMATION

Gene ID	5604
Gene Symbol	MAP2K1
Uniprot ID	MP2K1_HUMAN
Immunogen	A synthetic phosphorylated peptide around T286 of human MAP2K1 (NP_002746.1).
Immunogen Region	
Specificity	
Immunogen Sequence	



Western blot analysis of extracts of various cell lines, using Phospho-MAP2K1-T286 antibody (STJ22233) at 1:2000 dilution or MAP2K1 antibody (STJ236697). HeLa cells were treated by nocodazole (50 ng/mL) at 37 °C for 20 hours or treated by ATP (5 mM) at 30 °C for 1 hour. NIH/3T3 cells were treated by Nocodazole (50 ng/mL) at 37 °C for 20 hours or treated by ATP (5 mM) at 30 °C for 1 hour. PC-12 cells were treated by Nocodazole (1 μg/mL) at 37 °C for 16 hours or treated by ATP (5 mM) at 30 °C for 1 hour. Secondary antibody: HRP Goat Anti-rabbit IgG (H+L) at 1:10000 dilution. Lysates/proteins: 25μg per lane. Blocking buffer: 3% BSA. Detection: ECL Basic Kit. Exposure time: 30s.

This product is suitable for in-vitro studies under the RESEARCH USE ONLY [RUO] licence. This product must not be used as for diagnostic or other medical purposes.
 St John's Laboratory Ltd, Knowledge Dock Business Centre, University Way, London, E16 2RD | Tel: 0208 223 3081