

Anti-Phospho-IGF1R/INSR-Y1150/Y1135 antibody (STJ22192)

STJ22192

GENERAL INFORMATION

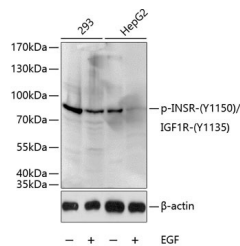
Product Type	Primary antibodies
Short Description	Rabbit polyclonal antibody anti-Phospho-IGF1R/INSR-Y1150/Y1135 is suitable for use in Western Blot.
Applications	WB
Host/Source	Rabbit
Reactivity	Human, Mouse, Rat

PRODUCT PROPERTIES

Clonality	Polyclonal
Clone ID	
Concentration	
Conjugation	Unconjugated
Purification	Affinity purification
Dilution Range	WB 1:500-1:2000
Formulation	PBS containing 0.02% Sodium Azide, 50% Glycerol, pH7.3.
Isotype	IgG
Storage Instruction	Store in a freezer at -20°C and avoid freeze-thaw cycles.

TARGET INFORMATION

Gene ID	3643 3480
Gene Symbol	INSR IGF1R
Uniprot ID	INSR_HUMAN IGF1R_HUMAN
Immunogen	A phospho specific peptide corresponding to residues surrounding Y1150 of human INSR and Y1135 of human IGF1R
Immunogen Region	
Specificity	
Immunogen Sequence	



Western blot analysis of extracts of 293 and HepG2 cells, using Phospho-INSR-Y1150/IGF1R-Y1135 antibody (STJ22192) at 1:1000 dilution. 293 cells were treated by EGF (25ug/mL) for 30 minutes after serum-starvation overnight. HepG2 cells were treated by EGF (100ng/mL) for 30 minutes after serum-starvation overnight. Secondary antibody: HRP Goat Anti-rabbit IgG (H+L) at 1:10000 dilution. Lysates/proteins: 25ug per lane. Blocking buffer: 3% BSA.

This product is suitable for in-vitro studies under the RESEARCH USE ONLY [RUO] licence. This product must not be used as for diagnostic or other medical purposes.
St John's Laboratory Ltd, Knowledge Dock Business Centre, University Way, London, E16 2RD | Tel: 0208 223 3081