

Anti-Phospho-HSPB1-S78 antibody (STJ22181)

STJ22181

GENERAL INFORMATION

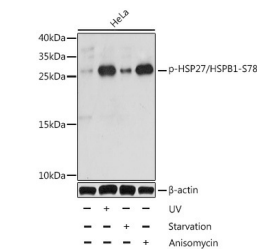
Product Type	Primary antibodies
Short Description	Rabbit polyclonal antibody anti-Phospho-HSPB1-S78 is suitable for use in Western Blot, Immunohistochemistry and Immunofluorescence.
Applications	WB, IHC, IF
Host/Source	Rabbit
Reactivity	Human

PRODUCT PROPERTIES

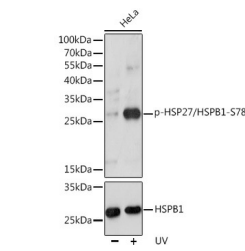
Clonality	Polyclonal
Clone ID	
Concentration	
Conjugation	Unconjugated
Purification	Affinity purification
Dilution Range	WB 1:500-1:2000 IHC 1:50-1:100 IF 1:100-1:200
Formulation	PBS containing 0.02% Sodium Azide, 50% Glycerol, pH7.3.
Isotype	IgG
Storage Instruction	Store in a freezer at -20°C and avoid freeze-thaw cycles.

TARGET INFORMATION

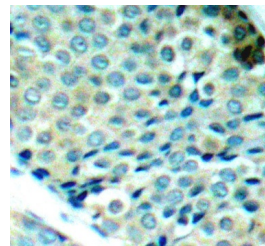
Gene ID	3315
Gene Symbol	HSPB1
Uniprot ID	HSPB1_HUMAN
Immunogen	A phospho specific peptide corresponding to residues surrounding S78 of human HSP27/HSPB1
Immunogen Region	
Specificity	
Immunogen Sequence	



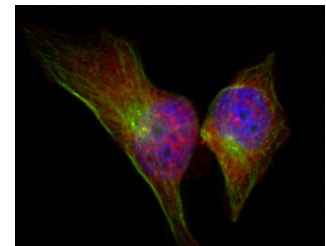
Western blot analysis of extracts of HeLa cells, using Phospho-HSP27/HSPB1-S78 antibody (STJ22181) at 1:1000 dilution. HeLa cells were treated by UV for 15-30 minutes or treated by serum-starvation overnight or treated by Anisomycin (25ug/mL) for 30 minutes after serum-starvation overnight. Secondary antibody: HRP Goat Anti-rabbit IgG (H+L) at 1:10000 dilution. Lysates/proteins: 25ug per lane. Blocking buffer: 3% BSA. Detection: ECL Basic Kit. Exposure time: 30s.



Western blot analysis of extracts of HeLa cells, using Phospho-HSP27/HSPB1-S78 polyclonal antibody (STJ22181) at 1:1000 dilution or HSP27/HSPB1 antibody (STJ240462). HeLa cells were treated by UV at room temperature for 15-30 minutes. Secondary antibody: HRP Goat Anti-rabbit IgG (H+L) at 1:10000 dilution. Lysates/proteins: 25ug per lane. Blocking buffer: 3% BSA. Detection: ECL Basic Kit. Exposure time: 30s.



Immunohistochemistry of paraffin-embedded human breast carcinoma using Phospho-HSP27/HSPB1-S78 antibody (STJ22181).



Immunofluorescence analysis of methanol-fixed HeLa cells showing cytoplasmic, nuclear, centrosomal, midbody staining using Phospho-HSP27/HSPB1-S78 antibody (STJ22181).

This product is suitable for in-vitro studies under the RESEARCH USE ONLY [RUO] licence. This product must not be used as for diagnostic or other medical purposes.

St John's Laboratory Ltd, Knowledge Dock Business Centre, University Way, London, E16 2RD | Tel: 0208 223 3081