

## Anti-Phospho-HSPB1-S82 antibody (STJ22179)

STJ22179

### GENERAL INFORMATION

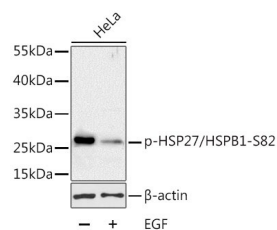
|                          |  |
|--------------------------|--|
| <b>Product Type</b>      | Primary antibodies   |
| <b>Short Description</b> | Rabbit polyclonal antibody anti-Phospho-HSPB1-S82 is suitable for use in Western Blot, Immunohistochemistry, Immunofluorescence and Immunoprecipitation. |
| <b>Applications</b>      | WB, IHC, IF, IP  |
| <b>Host/Source</b>       | Rabbit   |
| <b>Reactivity</b>        | Human  |

### PRODUCT PROPERTIES

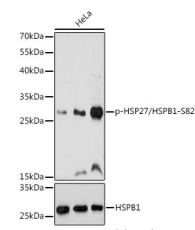
|                            |   |
|----------------------------|---|
| <b>Clonality</b>           | Polyclonal  |
| <b>Clone ID</b>            |   |
| <b>Concentration</b>       |   |
| <b>Conjugation</b>         | Unconjugated  |
| <b>Purification</b>        | Affinity purification   |
| <b>Dilution Range</b>      | WB 1:500-1:2000<br>IHC 1:50-1:200<br>IF 1:50-1:200<br>IP 1:50-1:100 |
| <b>Formulation</b>         | PBS containing 0.02% Sodium Azide, 50% Glycerol, pH7.3.             |
| <b>Isotype</b>             | IgG   |
| <b>Storage Instruction</b> | Store in a freezer at -20°C and avoid freeze-thaw cycles.           |

### TARGET INFORMATION

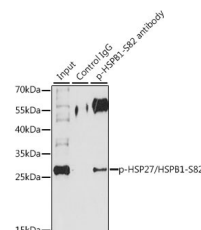
|                           |   |
|---------------------------|---|
| <b>Gene ID</b>            | 3315  |
| <b>Gene Symbol</b>        | HSPB1   |
| <b>Uniprot ID</b>         | HSPB1_HUMAN   |
| <b>Immunogen</b>          | A synthetic phosphorylated peptide around S82 of human HSP27/HSPB1 (NP_001531.1). |
| <b>Immunogen Region</b>   |   |
| <b>Specificity</b>        |   |
| <b>Immunogen Sequence</b> |   |



Western blot analysis of extracts of HeLa cells, using Phospho-HSP27/HSPB1-S82 antibody (STJ22179) at 1:1000 dilution. HeLa cells were treated by EGF (100ng/mL) for 30 minutes after serum-starvation overnight. Secondary antibody: HRP Goat Anti-rabbit IgG (H+L) at 1:10000 dilution. Lysates/proteins: 25ug per lane. Blocking buffer: 3% BSA. Detection: ECL Basic Kit. Exposure time: 1min.



Western blot analysis of extracts of HeLa cells, using Phospho-HSP27/HSPB1-S82 polyclonal antibody (STJ22179) at 1:1000 dilution or HSP27/HSPB1 antibody (STJ240462). HeLa cells were treated by UV at room temperature for 15-30 minutes. HeLa cells were treated by Anisomycin (25 ug/mL) at 37 °C for 30 minutes after serum-starvation overnight. Secondary antibody: HRP Goat Anti-rabbit IgG (H+L) at 1:10000 dilution. Lysates/proteins: 25ug per lane. Blocking buffer: 3% BSA. Detection: ECL Basic Kit. Exposure time: 10s.



Immunoprecipitation analysis of 200ug extracts of HeLa cells, using 3 ug Phospho-HSP27/HSPB1-S82 polyclonal antibody (STJ22179). Western blot was performed from the immunoprecipitate using Phospho-HSP27/HSPB1-S82 polyclonal antibody (STJ22179) at a dilution of 1:1000. HeLa cells were treated by EGF (100 ng/mL) at 37 °C for 30 minutes after serum-starvation overnight.

This product is suitable for in-vitro studies under the RESEARCH USE ONLY [RUO] licence. This product must not be used as for diagnostic or other medical purposes.  
St John's Laboratory Ltd, Knowledge Dock Business Centre, University Way, London, E16 2RD | Tel: 0208 223 3081