

## Anti-Phospho-HDAC8-S39 antibody (STJ22168)

STJ22168

### GENERAL INFORMATION

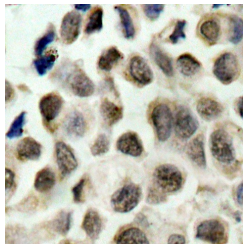
<b>Product Type</b>	Primary antibodies
<b>Short Description</b>	Rabbit polyclonal antibody anti-Phospho-HDAC8-S39 is suitable for use in Immunohistochemistry and Immunofluorescence.
<b>Applications</b>	IHC, IF
<b>Host/Source</b>	Rabbit
<b>Reactivity</b>	Human

### PRODUCT PROPERTIES

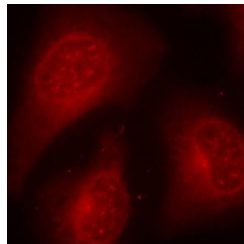
<b>Clonality</b>	Polyclonal
<b>Clone ID</b>	
<b>Concentration</b>	
<b>Conjugation</b>	Unconjugated
<b>Purification</b>	Affinity purification
<b>Dilution Range</b>	IHC 1:50-1:100 IF 1:100-1:200
<b>Formulation</b>	PBS containing 0.02% Sodium Azide, 50% Glycerol, pH7.3.
<b>Isotype</b>	IgG
<b>Storage Instruction</b>	Store in a freezer at -20°C and avoid freeze-thaw cycles.

### TARGET INFORMATION

<b>Gene ID</b>	<a href="#">55869</a>
<b>Gene Symbol</b>	<a href="#">HDAC8</a>
<b>Uniprot ID</b>	<a href="#">HDAC8_HUMAN</a>
<b>Immunogen</b>	A phospho specific peptide corresponding to residues surrounding S39 of human HDAC8
<b>Immunogen Region</b>	
<b>Specificity</b>	
<b>Immunogen Sequence</b>	



Immunohistochemistry of paraffin-embedded human lung carcinoma using Phospho-HDAC8-S39 antibody (STJ22168).



Immunofluorescence analysis of methanol-fixed HeLa cells using Phospho-HDAC8-S39 antibody (STJ22168).

This product is suitable for in-vitro studies under the RESEARCH USE ONLY [RUO] licence. This product must not be used as for diagnostic or other medical purposes.  
 St John's Laboratory Ltd, Knowledge Dock Business Centre, University Way, London, E16 2RD | Tel: 0208 223 3081