

Anti-Phospho-GAP43-S41 antibody (STJ22150)

STJ22150

GENERAL INFORMATION

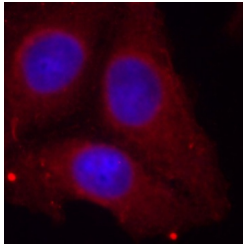
Product Type	Primary antibodies
Short Description	Rabbit polyclonal antibody anti-Phospho-GAP43-S41 is suitable for use in Western Blot and Immunofluorescence.
Applications	WB, IF
Host/Source	Rabbit
Reactivity	Human, Mouse, Rat

PRODUCT PROPERTIES

Clonality	Polyclonal
Clone ID	
Concentration	
Conjugation	Unconjugated
Purification	Affinity purification
Dilution Range	WB 1:500-1:2000 IF 1:50-1:200
Formulation	PBS containing 0.02% Sodium Azide, 50% Glycerol, pH7.3.
Isotype	IgG
Storage Instruction	Store in a freezer at -20°C and avoid freeze-thaw cycles.

TARGET INFORMATION

Gene ID	2596
Gene Symbol	GAP43
Uniprot ID	NEUM_HUMAN
Immunogen	A phospho specific peptide corresponding to residues surrounding S41 of human GAP43
Immunogen Region	
Specificity	
Immunogen Sequence	



Immunofluorescence analysis of methanol-fixed HeLa cells using Phospho-GAP43-S41 antibody (STJ22150).

This product is suitable for in-vitro studies under the RESEARCH USE ONLY [RUO] licence. This product must not be used as for diagnostic or other medical purposes.
St John's Laboratory Ltd, Knowledge Dock Business Centre, University Way, London, E16 2RD | Tel: 0208 223 3081