

## Anti-Phospho-FOXO1-S256 antibody (STJ22144)

STJ22144

### GENERAL INFORMATION

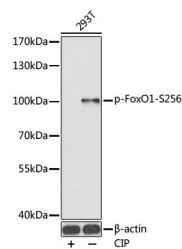
|                          |                                                                                                                |
|--------------------------|----------------------------------------------------------------------------------------------------------------|
| <b>Product Type</b>      | Primary antibodies                                                                                             |
| <b>Short Description</b> | Rabbit polyclonal antibody anti-Phospho-FoxO1-S256 is suitable for use in Western Blot and Immunofluorescence. |
| <b>Applications</b>      | WB, IF                                                                                                         |
| <b>Host/Source</b>       | Rabbit                                                                                                         |
| <b>Reactivity</b>        | Human, Mouse, Rat                                                                                              |

### PRODUCT PROPERTIES

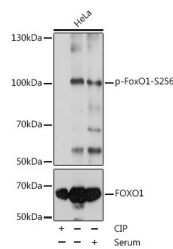
|                            |                                                           |
|----------------------------|-----------------------------------------------------------|
| <b>Clonality</b>           | Polyclonal                                                |
| <b>Clone ID</b>            |                                                           |
| <b>Concentration</b>       |                                                           |
| <b>Conjugation</b>         | Unconjugated                                              |
| <b>Purification</b>        | Affinity purification                                     |
| <b>Dilution Range</b>      | WB 1:500-1:1000<br>IF 1:50-1:200                          |
| <b>Formulation</b>         | PBS containing 0.02% Sodium Azide, 50% Glycerol, pH7.3.   |
| <b>Isotype</b>             | IgG                                                       |
| <b>Storage Instruction</b> | Store in a freezer at -20°C and avoid freeze-thaw cycles. |

### TARGET INFORMATION

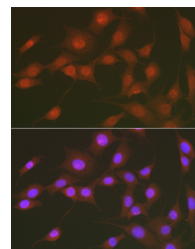
|                           |                                                                              |
|---------------------------|------------------------------------------------------------------------------|
| <b>Gene ID</b>            | 2308                                                                         |
| <b>Gene Symbol</b>        | FOXO1                                                                        |
| <b>Uniprot ID</b>         | FOXO1_HUMAN                                                                  |
| <b>Immunogen</b>          | A synthetic phosphorylated peptide around S256 of human FoxO1 (NP_002006.2). |
| <b>Immunogen Region</b>   |                                                                              |
| <b>Specificity</b>        |                                                                              |
| <b>Immunogen Sequence</b> |                                                                              |



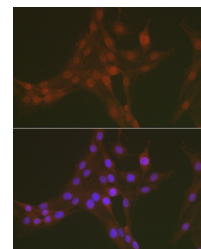
Western blot analysis of extracts of 293T cells, using Phospho-FoxO1-S256 antibody (STJ22144). 293T were treated by CIP (20ul CIP for each 400ul cell lysate) at 37 °C for 1 hour. Secondary antibody: HRP Goat Anti-rabbit IgG (H+L) at 1:10000 dilution. Lysates/proteins: 25ug per lane. Blocking buffer: 3% BSA. Detection: ECL Basic Kit. Exposure time: 90s.



Western blot analysis of extracts of HeLa cells, using Phospho-FoxO1-S256 polyclonal antibody (STJ22144) at 1:1000 dilution or FOXO1 antibody (STJ115801). HeLa cell lysate were treated by CIP (20ul CIP for each 400ul cell lysate) at 37 °C for 1 hour or treated by 10% FBS at 37 °C for 30 minutes after serum-starvation overnight. Secondary antibody: HRP Goat Anti-rabbit IgG (H+L) at 1:10000 dilution. Lysates/proteins: 25ug per lane. Blocking buffer: 3% BSA. Detection: ECL Basic Kit. Exposure times: 2s.



Immunofluorescence analysis of NIH/3T3 using Phospho-FoxO1-S256 antibody (STJ22144) at dilution of 1:50. Blue: DAPI for nuclear staining.



Immunofluorescence analysis of PC-12 using Phospho-FoxO1-S256 antibody (STJ22144) at dilution of 1:50. Blue: DAPI for nuclear staining.

This product is suitable for in-vitro studies under the RESEARCH USE ONLY [RUO] licence. This product must not be used as for diagnostic or other medical purposes.  
St John's Laboratory Ltd, Knowledge Dock Business Centre, University Way, London, E16 2RD | Tel: 0208 223 3081