

Anti-Phospho-ERBB3-Y1328 antibody (STJ22130)

STJ22130

GENERAL INFORMATION

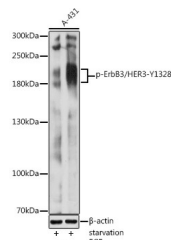
Product Type	Primary antibodies
Short Description	Rabbit polyclonal antibody anti-Phospho-ERBB3-Y1328 is suitable for use in Western Blot, Immunohistochemistry and Immunofluorescence.
Applications	WB, IHC, IF
Host/Source	Rabbit
Reactivity	Human, Mouse, Rat

PRODUCT PROPERTIES

Clonality	Polyclonal
Clone ID	
Concentration	
Conjugation	Unconjugated
Purification	Affinity purification
Dilution Range	WB 1:500-1:1000 IHC 1:50-1:100 IF 1:100-1:200
Formulation	PBS containing 0.02% Sodium Azide, 50% Glycerol, pH7.3.
Isotype	IgG
Storage Instruction	Store in a freezer at -20°C and avoid freeze-thaw cycles.

TARGET INFORMATION

Gene ID	2065
Gene Symbol	ERBB3
Uniprot ID	ERBB3_HUMAN
Immunogen	A phospho specific peptide corresponding to residues surrounding Y1328 of human ERBB3
Immunogen Region	
Specificity	
Immunogen Sequence	



Western blot analysis of extracts of A-431 cells, using Phospho-ErbB3/HER3-Y1328 antibody (STJ22130) at 1:2000 dilution. A-431 cells were treated by Serum-starvation overnight at 37 °C. A-431 cells were treated by EGF (100 ng/ml) at 37 °C for 30 minutes after serum-starvation overnight. Secondary antibody: HRP Goat Anti-rabbit IgG (H+L) at 1:10000 dilution. Lysates/proteins: 25µg per lane. Blocking buffer: 3% nonfat dry milk in TBST. Detection: ECL Basic Kit. Exposure time: 5s.

This product is suitable for in-vitro studies under the RESEARCH USE ONLY [RUO] licence. This product must not be used as for diagnostic or other medical purposes.
St John's Laboratory Ltd, Knowledge Dock Business Centre, University Way, London, E16 2RD | Tel: 0208 223 3081