

Anti-Phospho-EIF4EBP1-T37/46 antibody (STJ22117)

STJ22117

GENERAL INFORMATION

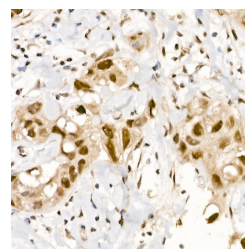
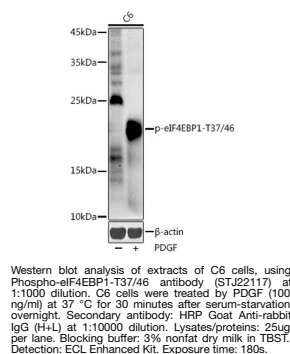
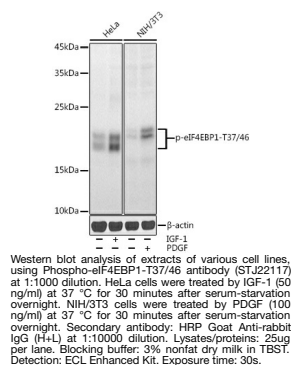
| | |
|--------------------------|-----------------------------------------------------------------------------------------------------------------------|
| Product Type | Primary antibodies |
| Short Description | Rabbit polyclonal antibody anti-Phospho-EIF4EBP1-T37/46 is suitable for use in Western Blot and Immunohistochemistry. |
| Applications | WB, IHC |
| Host/Source | Rabbit |
| Reactivity | Human, Mouse, Rat |

PRODUCT PROPERTIES

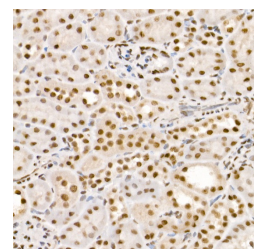
| | |
|----------------------------|-----------------------------------------------------------|
| Clonality | Polyclonal |
| Clone ID | |
| Concentration | |
| Conjugation | Unconjugated |
| Purification | Affinity purification |
| Dilution Range | WB 1:500-1:2000 IHC 1:50-1:200 |
| Formulation | PBS containing 0.02% Sodium Azide, 50% Glycerol, pH7.3. |
| Isotype | IgG |
| Storage Instruction | Store in a freezer at -20°C and avoid freeze-thaw cycles. |

TARGET INFORMATION

| | |
|---------------------------|----------------------------------------------------------------------------------------------------------|
| Gene ID | 1978 |
| Gene Symbol | EIF4EBP1 |
| Uniprot ID | 4EBP1_HUMAN |
| Immunogen | A phospho specific peptide corresponding to residues surrounding T37/46 of human Phospho-eIF4EBP1-T37/46 |
| Immunogen Region | |
| Specificity | |
| Immunogen Sequence | |



Immunohistochemistry of paraffin-embedded human breast cancer using Phospho-eIF4EBP1-T37/46 rabbit polyclonal antibody (STJ22117) at dilution of 1:200 (40x lens). Perform high pressure antigen retrieval with 10 mM citrate buffer pH 6.0 before commencing with immunohistochemistry staining protocol.



Immunohistochemistry of paraffin-embedded mouse kidney using Phospho-eIF4EBP1-T37/46 rabbit polyclonal antibody (STJ22117) at dilution of 1:200 (40x lens). Perform high pressure antigen retrieval with 10 mM citrate buffer pH 6.0 before commencing with immunohistochemistry staining protocol.