

Anti-Phospho-CDK1-T161 antibody (STJ22061)

STJ22061

GENERAL INFORMATION

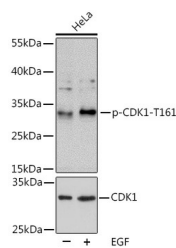
Product Type	Primary antibodies
Short Description	Rabbit polyclonal antibody anti-Phospho-CDK1-T161 is suitable for use in Western Blot, Immunohistochemistry, Immunofluorescence and Immunoprecipitation.
Applications	WB, IHC, IF, IP
Host/Source	Rabbit
Reactivity	Human, Mouse

PRODUCT PROPERTIES

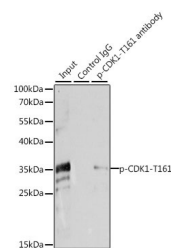
Clonality	Polyclonal
Clone ID	
Concentration	
Conjugation	Unconjugated
Purification	Affinity purification
Dilution Range	WB 1:500-1:2000 IHC 1:50-1:200 IF 1:50-1:200 IP 1:50-1:100
Formulation	PBS containing 0.02% Sodium Azide, 50% Glycerol, pH7.3.
Isotype	IgG
Storage Instruction	Store in a freezer at -20°C and avoid freeze-thaw cycles.

TARGET INFORMATION

Gene ID	983
Gene Symbol	CDK1
Uniprot ID	CDK1_HUMAN
Immunogen	A synthetic phosphorylated peptide around T161 of human CDK1 (NP_001777.1).
Immunogen	
Region	
Specificity	
Immunogen	
Sequence	



Western blot analysis of extracts of HeLa cells, using Phospho-CDK1-T161 polyclonal antibody (STJ22061) at 1:1000 dilution or CDK1 antibody (STJ26944). HeLa cells were treated by EGF (100ng/mL) for 30 minutes after serum-starvation overnight. Secondary antibody: HRP-Goat Anti-rabbit IgG (P+L) at 1:10000 dilution. Lysates/proteins: 25ug per lane. Blocking buffer: 3% BSA. Detection: ECL Basic Kit. Exposure time: 5min.



Immunoprecipitation analysis of 200ug extracts of HeLa cells, using 3 ug Phospho-CDK1-T161 polyclonal antibody (STJ22061). Western blot was performed from the immunoprecipitate using Phospho-CDK1-T161 polyclonal antibody (STJ22061) at a dilution of 1:1000. HeLa cells were treated by EGF (100 ng/mL) at 37 °C for 30 minutes after serum-starvation overnight.

This product is suitable for in-vitro studies under the RESEARCH USE ONLY [RUO] licence. This product must not be used as for diagnostic or other medical purposes.
St John's Laboratory Ltd, Knowledge Dock Business Centre, University Way, London, E16 2RD | Tel: 0208 223 3081