

Anti-Phospho-BRCA1-S988 antibody (STJ22045)

STJ22045

GENERAL INFORMATION

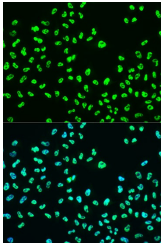
Product Type	Primary antibodies
Short Description	Rabbit polyclonal antibody anti-Phospho-BRCA1-S988 is suitable for use in Immunofluorescence.
Applications	IF
Host/Source	Rabbit
Reactivity	Human

PRODUCT PROPERTIES

Clonality	Polyclonal
Clone ID	
Concentration	
Conjugation	Unconjugated
Purification	Affinity purification
Dilution Range	IF 1:50-1:200
Formulation	PBS containing 0.02% Sodium Azide, 50% Glycerol, pH7.3.
Isotype	IgG
Storage Instruction	Store in a freezer at -20°C and avoid freeze-thaw cycles.

TARGET INFORMATION

Gene ID	672
Gene Symbol	BRCA1
Uniprot ID	BRCA1_HUMAN
Immunogen	A synthetic phosphorylated peptide around S988 of human BRCA1 (NP_009225.1).
Immunogen Region	
Specificity	
Immunogen Sequence	



Immunofluorescence analysis of U2OS cells using Phospho-BRCA1-S988 antibody (STJ22045) at dilution of 1:100. Blue: DAPI for nuclear staining.