

Anti-Phospho-AR-S650 antibody (STJ22020)

STJ22020

GENERAL INFORMATION

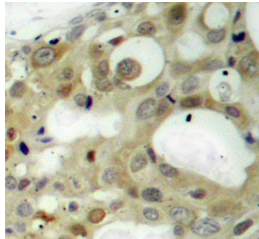
Product Type	Primary antibodies
Short Description	Rabbit polyclonal antibody anti-Phospho-AR-S650 is suitable for use in Immunohistochemistry.
Applications	IHC
Host/Source	Rabbit
Reactivity	Human

PRODUCT PROPERTIES

Clonality	Polyclonal
Clone ID	
Concentration	
Conjugation	Unconjugated
Purification	Affinity purification
Dilution Range	IHC 1:50-1:100
Formulation	PBS containing 0.02% Sodium Azide, 50% Glycerol, pH7.3.
Isotype	IgG
Storage Instruction	Store in a freezer at -20°C and avoid freeze-thaw cycles.

TARGET INFORMATION

Gene ID	367
Gene Symbol	AR
Uniprot ID	ANDR_HUMAN
Immunogen	A phospho specific peptide corresponding to residues surrounding S650 of human AR
Immunogen Region	
Specificity	
Immunogen Sequence	



Immunohistochemistry of paraffin-embedded human breast carcinoma using Phospho-Androgen Receptor-S650 antibody (STJ22020).