

Anti-Phospho-AKT1-T450 antibody (STJ22008)

STJ22008

GENERAL INFORMATION

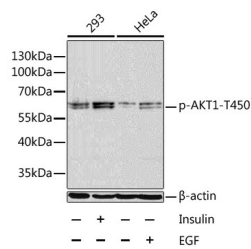
Product Type	Primary antibodies
Short Description	Rabbit polyclonal antibody anti-Phospho-AKT1-T450 is suitable for use in Western Blot and Immunofluorescence.
Applications	WB, IF
Host/Source	Rabbit
Reactivity	Human

PRODUCT PROPERTIES

Clonality	Polyclonal
Clone ID	
Concentration	
Conjugation	Unconjugated
Purification	Affinity purification
Dilution Range	WB 1:500-1:1000 IF 1:20-1:100
Formulation	PBS containing 0.02% Sodium Azide, 50% Glycerol, pH7.3.
Isotype	IgG
Storage Instruction	Store in a freezer at -20°C and avoid freeze-thaw cycles.

TARGET INFORMATION

Gene ID	207
Gene Symbol	AKT1
Uniprot ID	AKT1_HUMAN
Immunogen	A synthetic phosphorylated peptide around T450 of human AKT1 (NP_005154.2).
Immunogen Region	
Specificity	
Immunogen Sequence	



Western blot analysis of extracts of 293 and HeLa cells, using Phospho-AKT1-T450 antibody (STJ22008) at 1:1000 dilution. 293 cells were treated by Insulin (100nM) for 10 minutes after serum-starvation overnight. HeLa cells were treated by EGF (100ng/mL) for 30 minutes after serum-starvation overnight. Secondary antibody: HRP Goat Anti-rabbit IgG (H+L) at 1:10000 dilution. Lysates/proteins: 25ug per lane. Blocking buffer: 3% BSA. Detection: ECL Basic Kit. Exposure time: 1min.

This product is suitable for in-vitro studies under the RESEARCH USE ONLY [RUO] licence. This product must not be used as for diagnostic or other medical purposes.
St John's Laboratory Ltd, Knowledge Dock Business Centre, University Way, London, E16 2RD | Tel: 0208 223 3081