

Anti-ELMO3 antibody (STJ195956)

STJ195956

GENERAL INFORMATION

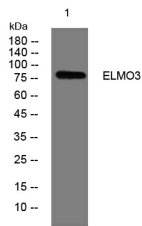
Product Type	Primary antibodies
Short Description	Rabbit polyclonal antibody anti-Engulfment And Cell Motility Protein 3 is suitable for use in Western Blot research applications.
Applications	WB
Host/Source	Rabbit
Reactivity	Human, Mouse, Rat

PRODUCT PROPERTIES

Clonality	Polyclonal
Clone ID	
Concentration	1 mg/mL
Conjugation	Unconjugated
Purification	The antibody was affinity-purified from rabbit anti-serum by affinity-chromatography.
Dilution Range	WB 1:500-2000
Formulation	PBS, 50% Glycerol, 0.5% BSA and 0.02% Sodium Azide.
Isotype	IgG
Storage Instruction	Store at -20°C for up to 1 year from the date of receipt, and avoid repeat freeze-thaw cycles.

TARGET INFORMATION

Gene ID	79767
Gene Symbol	ELMO3
Uniprot ID	ELMO3_HUMAN
Immunogen	Synthesized peptide derived from human ELMO3
Immunogen Region	
Specificity	ELMO3 polyclonal antibody (Engulfment And Cell Motility Protein 3) binds to endogenous Engulfment And Cell Motility Protein 3.
Immunogen Sequence	



Western blot analysis of lysates from CACO2 cells, primary antibody was diluted at 1:1000, 4°C over night