

Anti-MBLAC1 antibody (STJ195685)

STJ195685

GENERAL INFORMATION

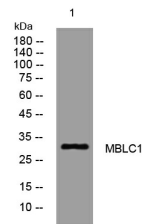
Product Type	Primary antibodies
Short Description	Rabbit polyclonal antibody anti-Metallo-Beta-Lactamase Domain-Containing Protein 1 is suitable for use in Western Blot research applications.
Applications	WB
Host/Source	Rabbit
Reactivity	Human, Mouse, Rat

PRODUCT PROPERTIES

Clonality	Polyclonal
Clone ID	
Concentration	1 mg/mL
Conjugation	Unconjugated
Purification	The antibody was affinity-purified from rabbit anti-serum by affinity-chromatography.
Dilution Range	WB 1:500-2000
Formulation	PBS, 50% Glycerol, 0.5% BSA and 0.02% Sodium Azide.
Isotype	IgG
Storage Instruction	Store at -20°C for up to 1 year from the date of receipt, and avoid repeat freeze-thaw cycles.

TARGET INFORMATION

Gene ID	255374
Gene Symbol	MBLAC1
Uniprot ID	MBLAC1_HUMAN
Immunogen	Synthesized peptide derived from human MBLAC1
Immunogen Region	
Specificity	MBLAC1 polyclonal antibody (Metallo-Beta-Lactamase Domain-Containing Protein 1) binds to endogenous Metallo-Beta-Lactamase Domain-Containing Protein 1.
Immunogen Sequence	



Western blot analysis of lysates from MCF-7 cells, primary antibody was diluted at 1:1000, 4°C over night