

Anti-MMD2 antibody (STJ195590)

STJ195590

GENERAL INFORMATION

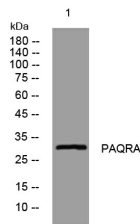
Product Type	Primary antibodies
Short Description	Rabbit polyclonal antibody anti-Monocyte To Macrophage Differentiation Factor 2 is suitable for use in Western Blot research applications.
Applications	WB
Host/Source	Rabbit
Reactivity	Human, Mouse

PRODUCT PROPERTIES

Clonality	Polyclonal
Clone ID	
Concentration	1 mg/mL
Conjugation	Unconjugated
Purification	The antibody was affinity-purified from rabbit anti-serum by affinity-chromatography.
Dilution Range	WB 1:500-2000
Formulation	PBS, 50% Glycerol, 0.5% BSA and 0.02% Sodium Azide.
Isotype	IgG
Storage Instruction	Store at -20°C for up to 1 year from the date of receipt, and avoid repeat freeze-thaw cycles.

TARGET INFORMATION

Gene ID	221938
Gene Symbol	MMD2
Uniprot ID	PAQRA_HUMAN
Immunogen	Synthesized peptide derived from human PAQRA
Immunogen Region	
Specificity	MMD2 polyclonal antibody (Monocyte To Macrophage Differentiation Factor 2) binds to endogenous Monocyte To Macrophage Differentiation Factor 2.
Immunogen Sequence	



Western blot analysis of lysates from 293T cells, primary antibody was diluted at 1:1000, 4°C over night