

Anti-PSMD8 antibody (STJ195541)

STJ195541

GENERAL INFORMATION

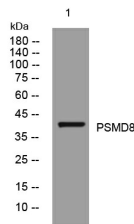
Product Type	Primary antibodies
Short Description	Rabbit polyclonal antibody anti-26s Proteasome Non-Atpase Regulatory Subunit 8 is suitable for use in Western Blot research applications.
Applications	WB
Host/Source	Rabbit
Reactivity	Human, Mouse

PRODUCT PROPERTIES

Clonality	Polyclonal
Clone ID	
Concentration	1 mg/mL
Conjugation	Unconjugated
Purification	The antibody was affinity-purified from rabbit anti-serum by affinity-chromatography.
Dilution Range	WB 1:500-2000
Formulation	PBS, 50% Glycerol, 0.5% BSA and 0.02% Sodium Azide.
Isotype	IgG
Storage Instruction	Store at -20°C for up to 1 year from the date of receipt, and avoid repeat freeze-thaw cycles.

TARGET INFORMATION

Gene ID	5714
Gene Symbol	PSMD8
Uniprot ID	PSMD8_HUMAN
Immunogen	Synthesized peptide derived from human PSMD8
Immunogen Region	
Specificity	PSMD8 polyclonal antibody (26s Proteasome Non-Atpase Regulatory Subunit 8) binds to endogenous 26s Proteasome Non-Atpase Regulatory Subunit 8.
Immunogen Sequence	



Western blot analysis of lysates from SW480 cells, primary antibody was diluted at 1:1000, 4°C over night

This product is suitable for in-vitro studies under the RESEARCH USE ONLY [RUO] licence. This product must not be used as for diagnostic or other medical purposes.
 St John's Laboratory Ltd, Knowledge Dock Business Centre, University Way, London, E16 2RD | Tel: 0208 223 3081