

Anti-SLC38A3 antibody (STJ195417)

STJ195417

GENERAL INFORMATION

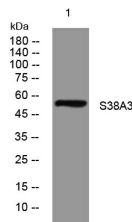
Product Type	Primary antibodies
Short Description	Rabbit polyclonal antibody anti-Sodium-Coupled Neutral Amino Acid Transporter 3 is suitable for use in Western Blot research applications.
Applications	WB
Host/Source	Rabbit
Reactivity	Human, Mouse, Rat

PRODUCT PROPERTIES

Clonality	Polyclonal
Clone ID	
Concentration	1 mg/mL
Conjugation	Unconjugated
Purification	The antibody was affinity-purified from rabbit anti-serum by affinity-chromatography.
Dilution Range	WB 1:500-2000
Formulation	PBS, 50% Glycerol, 0.5% BSA and 0.02% Sodium Azide.
Isotype	IgG
Storage Instruction	Store at -20°C for up to 1 year from the date of receipt, and avoid repeat freeze-thaw cycles.

TARGET INFORMATION

Gene ID	10991
Gene Symbol	SLC38A3
Uniprot ID	S38A3_HUMAN
Immunogen	Synthesized peptide derived from human S38A3
Immunogen Region	
Specificity	SLC38A3 polyclonal antibody (Sodium-Coupled Neutral Amino Acid Transporter 3) binds to endogenous Sodium-Coupled Neutral Amino Acid Transporter 3.
Immunogen Sequence	



Western blot analysis of lysates from A549 cells. primary antibody was diluted at 1:1000, 4°C over night

This product is suitable for in-vitro studies under the RESEARCH USE ONLY [RUO] licence. This product must not be used as for diagnostic or other medical purposes.
St John's Laboratory Ltd, Knowledge Dock Business Centre, University Way, London, E16 2RD | Tel: 0208 223 3081