

Anti-NLRP4 antibody (STJ195380)

STJ195380

GENERAL INFORMATION

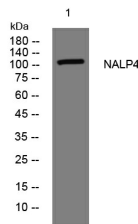
Product Type	Primary antibodies
Short Description	Rabbit polyclonal antibody anti-Nacht-Lrr And Pyd Domains-Containing Protein 4 is suitable for use in Western Blot research applications.
Applications	WB
Host/Source	Rabbit
Reactivity	Human, Rat, Mouse

PRODUCT PROPERTIES

Clonality	Polyclonal
Clone ID	
Concentration	1 mg/mL
Conjugation	Unconjugated
Purification	The antibody was affinity-purified from rabbit anti-serum by affinity-chromatography.
Dilution Range	WB 1:500-2000
Formulation	PBS, 50% Glycerol, 0.5% BSA and 0.02% Sodium Azide.
Isotype	IgG
Storage Instruction	Store at -20°C for up to 1 year from the date of receipt, and avoid repeat freeze-thaw cycles.

TARGET INFORMATION

Gene ID	147945
Gene Symbol	NLRP4
Uniprot ID	NALP4_HUMAN
Immunogen	Synthesized peptide derived from human NALP4
Immunogen Region	
Specificity	NLRP4 polyclonal antibody (Nacht-Lrr And Pyd Domains-Containing Protein 4) binds to endogenous Nacht-Lrr And Pyd Domains-Containing Protein 4.
Immunogen Sequence	



Western blot analysis of lysates from KB cells, primary antibody was diluted at 1:1000, 4°C over night