

## Anti-EI24 antibody (STJ195264)

STJ195264

### GENERAL INFORMATION

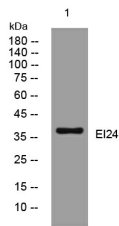
|                          |  |
|--------------------------|--|
| <b>Product Type</b>      | Primary antibodies   |
| <b>Short Description</b> | Rabbit polyclonal antibody anti-Etoposide-Induced Protein 2.4 Homolog is suitable for use in Western Blot research applications. |
| <b>Applications</b>      | WB   |
| <b>Host/Source</b>       | Rabbit   |
| <b>Reactivity</b>        | Human, Mouse, Rat  |

### PRODUCT PROPERTIES

|                            |  |
|----------------------------|--|
| <b>Clonality</b>           | Polyclonal   |
| <b>Clone ID</b>            |  |
| <b>Concentration</b>       | 1 mg/mL  |
| <b>Conjugation</b>         | Unconjugated   |
| <b>Purification</b>        | The antibody was affinity-purified from rabbit anti-serum by affinity-chromatography.          |
| <b>Dilution Range</b>      | WB 1:500-2000  |
| <b>Formulation</b>         | PBS, 50% Glycerol, 0.5% BSA and 0.02% Sodium Azide.  |
| <b>Isotype</b>             | IgG  |
| <b>Storage Instruction</b> | Store at -20°C for up to 1 year from the date of receipt, and avoid repeat freeze-thaw cycles. |

### TARGET INFORMATION

|                           |   |
|---------------------------|---|
| <b>Gene ID</b>            | 9538  |
| <b>Gene Symbol</b>        | EI24  |
| <b>Uniprot ID</b>         | EI24_HUMAN  |
| <b>Immunogen</b>          | Synthesized peptide derived from human EI24   |
| <b>Immunogen Region</b>   |   |
| <b>Specificity</b>        | EI24 polyclonal antibody (Etoposide-Induced Protein 2.4 Homolog) binds to endogenous Etoposide-Induced Protein 2.4 Homolog. |
| <b>Immunogen Sequence</b> |   |



Western blot analysis of lysates from KB cells, primary antibody was diluted at 1:1000, 4°C over night