

Anti-PWWP2A antibody (STJ195177)

STJ195177

GENERAL INFORMATION

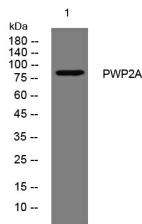
Product Type	Primary antibodies
Short Description	Rabbit polyclonal antibody anti-Pwwp Domain-Containing Protein 2a is suitable for use in Western Blot research applications.
Applications	WB
Host/Source	Rabbit
Reactivity	Human, Mouse

PRODUCT PROPERTIES

Clonality	Polyclonal
Clone ID	
Concentration	1 mg/mL
Conjugation	Unconjugated
Purification	The antibody was affinity-purified from rabbit anti-serum by affinity-chromatography.
Dilution Range	WB 1:500-2000
Formulation	PBS, 50% Glycerol, 0.5% BSA and 0.02% Sodium Azide.
Isotype	IgG
Storage Instruction	Store at -20°C for up to 1 year from the date of receipt, and avoid repeat freeze-thaw cycles.

TARGET INFORMATION

Gene ID	114825
Gene Symbol	PWWP2A
Uniprot ID	PWWP2A_HUMAN
Immunogen	Synthesized peptide derived from human PWWP2A
Immunogen Region	
Specificity	PWWP2A polyclonal antibody (Pwwp Domain-Containing Protein 2a) binds to endogenous Pwwp Domain-Containing Protein 2a.
Immunogen Sequence	



Western blot analysis of lysates from HEK293 cells, primary antibody was diluted at 1:1000, 4°C over night