

Anti-RAX2 antibody (STJ195003)

STJ195003

GENERAL INFORMATION

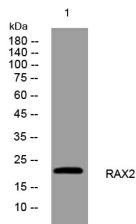
| | |
|--------------------------|---|
| Product Type | Primary antibodies |
| Short Description | Rabbit polyclonal antibody anti-Retina And Anterior Neural Fold Homeobox Protein 2 is suitable for use in Western Blot research applications. |
| Applications | WB |
| Host/Source | Rabbit |
| Reactivity | Human, Rat, Mouse |

PRODUCT PROPERTIES

| | |
|----------------------------|--|
| Clonality | Polyclonal |
| Clone ID | |
| Concentration | 1 mg/mL |
| Conjugation | Unconjugated |
| Purification | The antibody was affinity-purified from rabbit anti-serum by affinity-chromatography. |
| Dilution Range | WB 1:500-2000 |
| Formulation | PBS, 50% Glycerol, 0.5% BSA and 0.02% Sodium Azide. |
| Isotype | IgG |
| Storage Instruction | Store at -20°C for up to 1 year from the date of receipt, and avoid repeat freeze-thaw cycles. |

TARGET INFORMATION

| | |
|---------------------------|---|
| Gene ID | 84839 |
| Gene Symbol | RAX2 |
| Uniprot ID | RAX2_HUMAN |
| Immunogen | Synthesized peptide derived from human RAX2 |
| Immunogen Region | |
| Specificity | RAX2 polyclonal antibody (Retina And Anterior Neural Fold Homeobox Protein 2) binds to endogenous Retina And Anterior Neural Fold Homeobox Protein 2. |
| Immunogen Sequence | |



Western blot analysis of lysates from HpeG2 cells, primary antibody was diluted at 1:1000, 4°C over night