

Anti-HLA-DRB1 antibody (STJ194910)

STJ194910

GENERAL INFORMATION

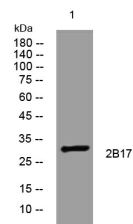
Product Type	Primary antibodies
Short Description	Rabbit polyclonal antibody anti-HLA class II histocompatibility antigen, DRB1 beta chain is suitable for use in Western Blot research applications.
Applications	WB
Host/Source	Rabbit
Reactivity	Human, Rat, Mouse

PRODUCT PROPERTIES

Clonality	Polyclonal
Clone ID	
Concentration	1 mg/mL
Conjugation	Unconjugated
Purification	The antibody was affinity-purified from rabbit anti-serum by affinity-chromatography.
Dilution Range	WB 1:500-2000
Formulation	PBS, 50% Glycerol, 0.5% BSA and 0.02% Sodium Azide.
Isotype	IgG
Storage Instruction	Store at -20°C for up to 1 year from the date of receipt, and avoid repeat freeze-thaw cycles.

TARGET INFORMATION

Gene ID	3123
Gene Symbol	HLA-DRB1
Uniprot ID	DRB1_HUMAN
Immunogen	Synthesized peptide derived from human 2B17
Immunogen Region	
Specificity	HLA-DRB1 polyclonal antibody (HLA class II histocompatibility antigen, DRB1 beta chain) binds to endogenous HLA class II histocompatibility antigen, DRB1 beta chain.
Immunogen Sequence	



Western blot analysis of lysates from HpeG2 cells. primary antibody was diluted at 1:1000, 4°C over night

This product is suitable for in-vitro studies under the RESEARCH USE ONLY [RUO] licence. This product must not be used as for diagnostic or other medical purposes.
 St John's Laboratory Ltd, Knowledge Dock Business Centre, University Way, London, E16 2RD | Tel: 0208 223 3081