

Anti-Phospho-NKX2-1-Ser327 antibody (STJ194753)

STJ194753

GENERAL INFORMATION

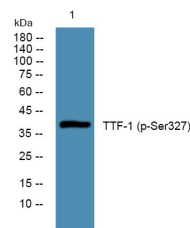
Product Type	Primary antibodies
Short Description	Rabbit polyclonal antibody anti-Phospho-Homeobox Protein Nkx-2.1-Ser327 is suitable for use in Western Blot research applications.
Applications	WB
Host/Source	Rabbit
Reactivity	Human, Rat, Mouse

PRODUCT PROPERTIES

Clonality	Polyclonal
Clone ID	
Concentration	1 mg/mL
Conjugation	Unconjugated
Purification	The antibody was affinity-purified from rabbit anti-serum by affinity-chromatography.
Dilution Range	WB 1:1000-2000
Formulation	PBS, 50% Glycerol, 0.5% BSA and 0.02% Sodium Azide.
Isotype	IgG
Storage Instruction	Store at -20°C for up to 1 year from the date of receipt, and avoid repeat freeze-thaw cycles.

TARGET INFORMATION

Gene ID	7080
Gene Symbol	NKX2-1
Uniprot ID	NKX21_HUMAN
Immunogen	Synthesized phosho peptide around human TTF-1 (Ser327)
Immunogen Region	
Specificity	Phospho-NKX2-1-Ser327 polyclonal antibody (Homeobox Protein Nkx-2.1) binds to endogenous Homeobox Protein Nkx-2.1 only when phosphorylated at Ser327.
Immunogen Sequence	



Western blot analysis of lysates from HCT116 cells. primary antibody was diluted at 1:1000, 4°C over night

This product is suitable for in-vitro studies under the RESEARCH USE ONLY [RUO] licence. This product must not be used as for diagnostic or other medical purposes.
St John's Laboratory Ltd, Knowledge Dock Business Centre, University Way, London, E16 2RD | Tel: 0208 223 3081