

Anti-Phospho-MAP2K4-Ser257/Thr261 antibody (STJ194743)

STJ194743

GENERAL INFORMATION

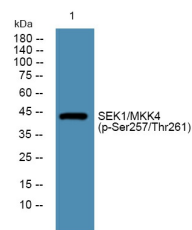
| | |
|--------------------------|---|
| Product Type | Primary antibodies |
| Short Description | Rabbit polyclonal antibody anti-Phospho-Dual Specificity Mitogen-Activated Protein Kinase Kinase 4-Ser257/Thr261 is suitable for use in Western Blot research applications. |
| Applications | WB |
| Host/Source | Rabbit |
| Reactivity | Human, Mouse, Rat |

PRODUCT PROPERTIES

| | |
|----------------------------|--|
| Clonality | Polyclonal |
| Clone ID | |
| Concentration | 1 mg/mL |
| Conjugation | Unconjugated |
| Purification | The antibody was affinity-purified from rabbit anti-serum by affinity-chromatography. |
| Dilution Range | WB 1:1000-2000 |
| Formulation | PBS, 50% Glycerol, 0.5% BSA and 0.02% Sodium Azide. |
| Isotype | IgG |
| Storage Instruction | Store at -20°C for up to 1 year from the date of receipt, and avoid repeat freeze-thaw cycles. |

TARGET INFORMATION

| | |
|---------------------------|---|
| Gene ID | 6416 |
| Gene Symbol | MAP2K4 |
| Uniprot ID | MP2K4_HUMAN |
| Immunogen | Synthesized phosho peptide around human SEK1 (Ser257 and Thr261) |
| Region | |
| Specificity | Phospho-MAP2K4-Ser257/Thr261 polyclonal antibody (Dual Specificity Mitogen-Activated Protein Kinase Kinase 4) binds to endogenous Dual Specificity Mitogen-Activated Protein Kinase Kinase 4 only when phosphorylated at Ser257/Thr261. |
| Immunogen Sequence | |



Western blot analysis of lysates from K562 cells, primary antibody was diluted at 1:1000, 4°C over night

This product is suitable for in-vitro studies under the RESEARCH USE ONLY [RUO] licence. This product must not be used as for diagnostic or other medical purposes.
St John's Laboratory Ltd, Knowledge Dock Business Centre, University Way, London, E16 2RD | Tel: 0208 223 3081