

Anti-Phospho-RCC1-Ser11 antibody (STJ194740)

STJ194740

GENERAL INFORMATION

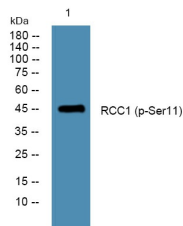
Product Type	Primary antibodies
Short Description	Rabbit polyclonal antibody anti-Phospho-Regulator Of Chromosome Condensation-Ser11 is suitable for use in Western Blot research applications.
Applications	WB
Host/Source	Rabbit
Reactivity	Human, Rat, Mouse

PRODUCT PROPERTIES

Clonality	Polyclonal
Clone ID	
Concentration	1 mg/mL
Conjugation	Unconjugated
Purification	The antibody was affinity-purified from rabbit anti-serum by affinity-chromatography.
Dilution Range	WB 1:1000-2000
Formulation	PBS, 50% Glycerol, 0.5% BSA and 0.02% Sodium Azide.
Isotype	IgG
Storage Instruction	Store at -20°C for up to 1 year from the date of receipt, and avoid repeat freeze-thaw cycles.

TARGET INFORMATION

Gene ID	1104
Gene Symbol	RCC1
Uniprot ID	RCC1_HUMAN
Immunogen	Synthesized phospho peptide around human RCC1 (Ser11)
Immunogen Region	
Specificity	Phospho-RCC1-Ser11 polyclonal antibody (Regulator Of Chromosome Condensation) binds to endogenous Regulator Of Chromosome Condensation only when phosphorylated at Ser11.
Immunogen Sequence	



Western blot analysis of lysates from Jarkat cells. primary antibody was diluted at 1:1000, 4°C over night

This product is suitable for in-vitro studies under the RESEARCH USE ONLY [RUO] licence. This product must not be used as for diagnostic or other medical purposes.
 St John's Laboratory Ltd, Knowledge Dock Business Centre, University Way, London, E16 2RD | Tel: 0208 223 3081